

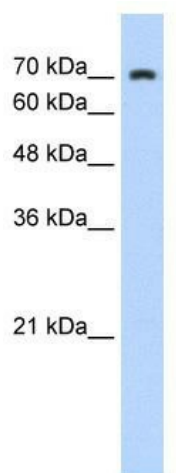
Product datasheet for **TA341475**

ZNF441 Rabbit Polyclonal Antibody

Product data:

Product Type:	Primary Antibodies
Applications:	WB
Recommended Dilution:	WB
Reactivity:	Human
Host:	Rabbit
Isotype:	IgG
Clonality:	Polyclonal
Immunogen:	The immunogen for anti-ZNF441 antibody: synthetic peptide directed towards the N terminal of human ZNF441. Synthetic peptide located within the following region: MVERACEIKDNSQCGGPFTQTQDSIVNEKIPGVDPWESSECTDVLMGRSS
Formulation:	Liquid. Purified antibody supplied in 1x PBS buffer with 0.09% (w/v) sodium azide and 2% sucrose.
Concentration:	lot specific
Conjugation:	Unconjugated
Storage:	Store at -20°C as received.
Stability:	Stable for 12 months from date of receipt.
Predicted Protein Size:	72 kDa
Gene Name:	zinc finger protein 441
Database Link:	NP_689568 Entrez Gene 126068 Human Q8N8Z8
Background:	May be involved in transcriptional regulation.
Synonyms:	FLJ38637
Note:	Immunogen Sequence Homology: Human: 100%


[View online »](#)

Product images:


WB Suggested Anti-ZNF441 Antibody Titration:
0.2-1 ug/ml; Positive Control: HepG2 cell lysate