

## Product datasheet for **TA341474**

### ZNF285 Rabbit Polyclonal Antibody

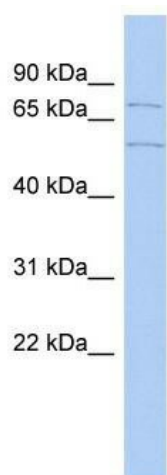
#### Product data:

|                         |   |
|-------------------------|---|
| Product Type:           | Primary Antibodies  |
| Applications:           | WB  |
| Recommended Dilution:   | WB  |
| Reactivity:             | Human   |
| Host:                   | Rabbit  |
| Isotype:                | IgG   |
| Clonality:              | Polyclonal  |
| Immunogen:              | The immunogen for anti-ZNF285A antibody: synthetic peptide directed towards the middle region of human ZNF285A. Synthetic peptide located within the following region: PYEFHEWPMGCKQSSDLPRYQKVSSGDKPYKCKEKGKGFRRSSSLHNHHR |
| Formulation:            | Liquid. Purified antibody supplied in 1x PBS buffer with 0.09% (w/v) sodium azide and 2% sucrose.<br><i>Note that this product is shipped as lyophilized powder to China customers.</i>                                   |
| Concentration:          | lot specific  |
| Conjugation:            | Unconjugated  |
| Storage:                | Store at -20°C as received.   |
| Stability:              | Stable for 12 months from date of receipt.  |
| Predicted Protein Size: | 68 kDa  |
| Gene Name:              | zinc finger protein 285   |
| Database Link:          | <a href="#">NP_689567</a><br><a href="#">Entrez Gene 26974 Human</a><br><a href="#">Q96NJ3</a>  |
| Background:             | May be involved in transcriptional regulation.  |
| Synonyms:               | ZNF285A   |
| Note:                   | Immunogen Sequence Homology: Human: 100%; Dog: 91%  |
| Protein Families:       | Transcription Factors   |



[View online »](#)

## Product images:



WB Suggested Anti-ZNF285A Antibody Titration:  
0.2-1 ug/ml; ELISA Titer: 1:1562500; Positive  
Control: ACHN cell lysate