

Product datasheet for **TA341468**

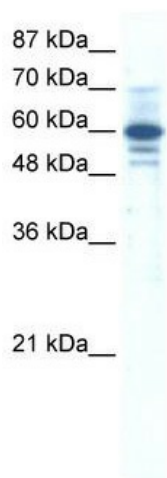
ZNF276 Rabbit Polyclonal Antibody

Product data:

Product Type:	Primary Antibodies
Applications:	WB
Recommended Dilution:	WB
Reactivity:	Human
Host:	Rabbit
Isotype:	IgG
Clonality:	Polyclonal
Immunogen:	The immunogen for anti-ZNF276 antibody: synthetic peptide directed towards the middle region of human ZNF276. Synthetic peptide located within the following region: LSEGDVLSDEDNDKKQNAQSSDESFEYPYPERKVS GKKSESKEAKKSEEP R
Formulation:	Liquid. Purified antibody supplied in 1x PBS buffer with 0.09% (w/v) sodium azide and 2% sucrose. <i>Note that this product is shipped as lyophilized powder to China customers.</i>
Concentration:	lot specific
Conjugation:	Unconjugated
Storage:	Store at -20°C as received.
Stability:	Stable for 12 months from date of receipt.
Predicted Protein Size:	60 kDa
Gene Name:	zinc finger protein 276
Database Link:	NP_689500 Entrez Gene 92822 Human Q8N554
Background:	May be involved in transcriptional regulation.
Synonyms:	CENP-Z; CENPZ; ZADT; ZFP276; ZNF477
Note:	Immunogen Sequence Homology: Pig: 100%; Human: 100%; Guinea pig: 100%; Dog: 93%; Rat: 93%; Bovine: 93%; Mouse: 85%; Horse: 79%
Protein Families:	Transcription Factors



[View online »](#)

Product images:

WB Suggested Anti-ZNF276 Antibody Titration:
0.2-1 ug/ml; ELISA Titer: 1:62500; Positive Control:
HepG2 cell lysate