

Product datasheet for TA341466

Lass5 (CERS5) Rabbit Polyclonal Antibody

Product data:

Product Type:	Primary Antibodies
Applications:	WB
Recommended Dilution:	WB
Reactivity:	Human
Host:	Rabbit
Isotype:	IgG
Clonality:	Polyclonal
Immunogen:	The immunogen for anti-LASS5 antibody: synthetic peptide directed towards the N terminal of human LASS5. Synthetic peptide located within the following region: PCALCIGIEDSGPYQAQPNAILEKVFISITKYPDKKRLEGLSKQLDWNVR
Formulation:	Liquid. Purified antibody supplied in 1x PBS buffer with 0.09% (w/v) sodium azide and 2% sucrose. <i>Note that this product is shipped as lyophilized powder to China customers.</i>
Concentration:	lot specific
Conjugation:	Unconjugated
Storage:	Store at -20°C as received.
Stability:	Stable for 12 months from date of receipt.
Predicted Protein Size:	46 kDa
Gene Name:	ceramide synthase 5
Database Link:	NP_671723 Entrez Gene 91012 Human Q8N5B7
Background:	This gene encodes a protein that belongs toThe TLC (TRAM, LAG1 and CLN8 homology domains) family of proteins.The encoded protein functions inThe synthesis of ceramide, a lipid molecule that is involved in a several cellular signaling pathways. Alternate splicing results in multiple transcript variants. [provided by RefSeq, Aug 2013]
Synonyms:	LASS5; Trh4

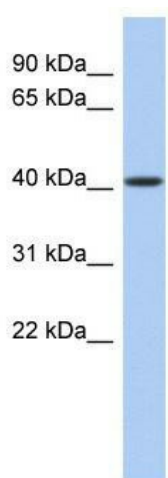


[View online »](#)

Note: Immunogen Sequence Homology: Human: 100%; Bovine: 100%; Rabbit: 100%; Horse: 93%; Pig: 92%; Guinea pig: 92%; Dog: 86%; Rat: 86%; Mouse: 86%; Zebrafish: 86%

Protein Families: Transcription Factors, Transmembrane

Product images:



WB Suggested Anti-LASS5 Antibody Titration: 0.2-1 ug/ml; ELISA Titer: 1:12500; Positive Control: Human kidney