

## Product datasheet for **TA341462**

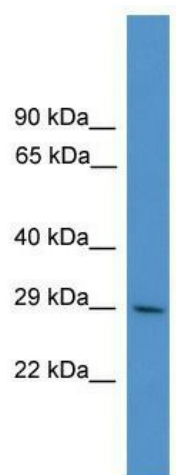
### ZNF688 Rabbit Polyclonal Antibody

#### Product data:

Product Type:	Primary Antibodies
Applications:	WB
Recommended Dilution:	WB
Reactivity:	Human
Host:	Rabbit
Isotype:	IgG
Clonality:	Polyclonal
Immunogen:	The immunogen for anti-ZNF688 antibody: synthetic peptide directed towards the middle region of human ZNF688. Synthetic peptide located within the following region: KGPRKAPVKESPEVLVERNPDPAISVAPARAQPPKNAAWDPTTGAQPPAP
Formulation:	Liquid. Purified antibody supplied in 1x PBS buffer with 0.09% (w/v) sodium azide and 2% sucrose. <i>Note that this product is shipped as lyophilized powder to China customers.</i>
Concentration:	lot specific
Conjugation:	Unconjugated
Storage:	Store at -20°C as received.
Stability:	Stable for 12 months from date of receipt.
Predicted Protein Size:	30 kDa
Gene Name:	zinc finger protein 688
Database Link:	<a href="#">NP_660314</a> <a href="#">Entrez Gene 146542 Human</a> <a href="#">P0C7X2</a>
Background:	May be involved in transcriptional regulation.
Synonyms:	MGC13138; OTTHUMP00000163244; zinc finger protein 688
Note:	Immunogen Sequence Homology: Human: 100%
Protein Families:	Transcription Factors



[View online »](#)

**Product images:**

WB Suggested Anti-ZNF688 Antibody Titration:  
0.2-1 ug/ml; ELISA Titer: 1:62500; Positive Control:  
THP-1 cell lysate