

Product datasheet for **TA341460**

MATH5 (ATOH7) Rabbit Polyclonal Antibody

Product data:

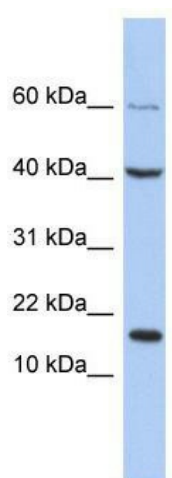
Product Type:	Primary Antibodies
Applications:	WB
Recommended Dilution:	WB
Reactivity:	Human
Host:	Rabbit
Isotype:	IgG
Clonality:	Polyclonal
Immunogen:	The immunogen for anti-ATOH7 antibody: synthetic peptide directed towards the C terminal of human ATOH7. Synthetic peptide located within the following region: FGSERDWVGLHCEHFGRDHYLPFPGAKLPGSELYSQRLFQGFQPEPFQMA
Formulation:	Liquid. Purified antibody supplied in 1x PBS buffer with 0.09% (w/v) sodium azide and 2% sucrose.
Concentration:	lot specific
Conjugation:	Unconjugated
Storage:	Store at -20°C as received.
Stability:	Stable for 12 months from date of receipt.
Predicted Protein Size:	17 kDa
Gene Name:	atonal bHLH transcription factor 7
Database Link:	NP_660161 Entrez Gene 220202 Human Q8N100
Background:	This intronless gene encodes a member of the basic helix-loop-helix family of transcription factors, with similarity to Drosophila atonal gene that controls photoreceptor development. Studies in mice suggest that this gene plays a central role in retinal ganglion cell and optic nerve formation. Mutations in this gene are associated with nonsyndromic congenital retinal nonattachment. [provided by RefSeq, Dec 2011]
Synonyms:	bHLHa13; Math5; NCRNA; PHPVAR; RNANC
Note:	Immunogen Sequence Homology: Human: 100%; Pig: 86%; Dog: 85%; Bovine: 77%



[View online »](#)

Protein Families: Transcription Factors

Product images:



WB Suggested Anti-ATOH7 Antibody Titration:
0.2-1 ug/ml; ELISA Titer: 1:62500; Positive Control:
THP-1 cell lysate