

Product datasheet for **TA341457**

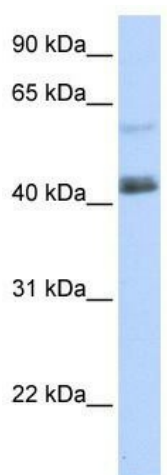
PRDM15 Rabbit Polyclonal Antibody

Product data:

Product Type:	Primary Antibodies
Applications:	WB
Recommended Dilution:	WB
Reactivity:	Human
Host:	Rabbit
Isotype:	IgG
Clonality:	Polyclonal
Immunogen:	The immunogen for anti-PRDM15 antibody: synthetic peptide directed towards the C terminal of human PRDM15. Synthetic peptide located within the following region: SILTVTFDTVSGSAMLHNRQNDVQIHPQPEASNPQSVAHFINLTLVNSI
Formulation:	Liquid. Purified antibody supplied in 1x PBS buffer with 0.09% (w/v) sodium azide and 2% sucrose.
Concentration:	lot specific
Conjugation:	Unconjugated
Storage:	Store at -20°C as received.
Stability:	Stable for 12 months from date of receipt.
Predicted Protein Size:	39 kDa
Database Link:	Entrez Gene 63977 Human
Background:	May be involved in transcriptional regulation.
Note:	Immunogen Sequence Homology: Rat: 100%; Human: 100%; Mouse: 100%; Dog: 93%; Pig: 93%; Bovine: 93%; Guinea pig: 79%



[View online »](#)

Product images:

WB Suggested Anti-PRDM15 Antibody Titration:
0.2-1 ug/ml; ELISA Titer: 1:62500; Positive Control:
293T cell lysate