

Product datasheet for TA341454

TGIF2LY Rabbit Polyclonal Antibody

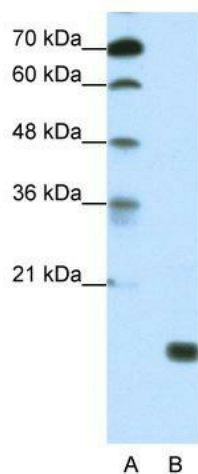
Product data:

Product Type:	Primary Antibodies
Applications:	WB
Recommended Dilution:	WB
Reactivity:	Human
Host:	Rabbit
Isotype:	IgG
Clonality:	Polyclonal
Immunogen:	The immunogen for anti-TGIF2LY antibody: synthetic peptide directed towards the middle region of human TGIF2LY. Synthetic peptide located within the following region: NWFINARRRILPDMLQRRNDPIIGHKTGKDAHATHLQSTEASVPAKSGP
Formulation:	Liquid. Purified antibody supplied in 1x PBS buffer with 0.09% (w/v) sodium azide and 2% sucrose.
Concentration:	lot specific
Conjugation:	Unconjugated
Storage:	Store at -20°C as received.
Stability:	Stable for 12 months from date of receipt.
Predicted Protein Size:	21 kDa
Gene Name:	TGFB induced factor homeobox 2 like, Y-linked
Database Link:	NP_631960 Entrez Gene 90655 Human Q8IUQ0
Background:	This gene encodes a member ofThe TALE/TGIF homeobox family of transcription factors.This gene lies withinThe male specific region of chromosome Y, in a block of sequence that is thought to beThe result of a large X-to-Y transposition.The C-terminus ofThis protein is divergent from that of its chromosome X homolog (TGIF2LX), suggesting thatThis protein may act as a regulator of TGIF2LX. [provided by RefSeq, Jul 2008]
Synonyms:	TGIFLY
Note:	Immunogen Sequence Homology: Human: 100%; Yeast: 90%


[View online »](#)

Protein Families: Transcription Factors

Product images:



WB Suggested Anti-TGIF2LY Antibody; Titration: 1.25 ug/ml; Positive Control: HepG2 Whole Cell