

Product datasheet for **TA341452**

TGIF2LX Rabbit Polyclonal Antibody

Product data:

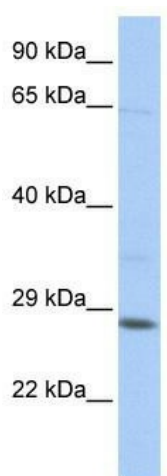
Product Type:	Primary Antibodies
Applications:	WB
Recommended Dilution:	WB
Reactivity:	Human
Host:	Rabbit
Isotype:	IgG
Clonality:	Polyclonal
Immunogen:	The immunogen for anti-TGIF2LX antibody: synthetic peptide directed towards the middle region of human TGIF2LX. Synthetic peptide located within the following region: KVKVSVTSPSSPELVSPPEEHADFSSFLLLVDAAVQRAAELELEKKQEPNP
Formulation:	Liquid. Purified antibody supplied in 1x PBS buffer with 0.09% (w/v) sodium azide and 2% sucrose.
Concentration:	lot specific
Conjugation:	Unconjugated
Storage:	Store at -20°C as received.
Stability:	Stable for 12 months from date of receipt.
Predicted Protein Size:	27 kDa
Gene Name:	TGFB induced factor homeobox 2 like, X-linked
Database Link:	NP_620410 Entrez Gene 90316 Human Q8IU1
Background:	This gene encodes a member ofThe TALE/TGIF homeobox family of transcription factors. Testis-specific expression suggests thatThis gene may play a role in spermatogenesis. A homolog ofThis gene lies withinThe male specific region of chromosome Y, in a block of sequence that is thought to beThe result of a large X-to-Y transposition. [provided by RefSeq, Jul 2008]
Synonyms:	TGIFLX
Note:	Immunogen Sequence Homology: Human: 100%; Pig: 93%; Guinea pig: 93%; Dog: 86%



[View online »](#)

Protein Families: Transcription Factors

Product images:



WB Suggested Anti-TGIF2LX Antibody Titration:
0.2-1 ug/ml; ELISA Titer: 1:62500; Positive Control:
Jurkat cell lysate