

## Product datasheet for **TA341451**

### TGIF2LX Rabbit Polyclonal Antibody

#### Product data:

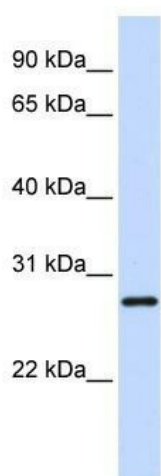
Product Type:	Primary Antibodies
Applications:	WB
Recommended Dilution:	WB
Reactivity:	Human
Host:	Rabbit
Isotype:	IgG
Clonality:	Polyclonal
Immunogen:	The immunogen for anti-TGIF2LX antibody: synthetic peptide directed towards the middle region of human TGIF2LX. Synthetic peptide located within the following region: SGPSGPDNVQSLPLWPLPKGQMSREKQPDPEAPSQKLTGIAQPKKKVKV
Formulation:	Liquid. Purified antibody supplied in 1x PBS buffer with 0.09% (w/v) sodium azide and 2% sucrose.
Concentration:	lot specific
Conjugation:	Unconjugated
Storage:	Store at -20°C as received.
Stability:	Stable for 12 months from date of receipt.
Predicted Protein Size:	27 kDa
Gene Name:	TGFB induced factor homeobox 2 like, X-linked
Database Link:	<a href="#">NP_620410</a> <a href="#">Entrez Gene 90316 Human</a> <a href="#">Q8IU1</a>
Background:	This gene encodes a member of the TALE/TGIF homeobox family of transcription factors. Testis-specific expression suggests that this gene may play a role in spermatogenesis. A homolog of this gene lies within the male specific region of chromosome Y, in a block of sequence that is thought to be the result of a large X-to-Y transposition. [provided by RefSeq, Jul 2008]
Synonyms:	TGIFLX
Note:	Immunogen Sequence Homology: Human: 100%; Rat: 77%



[View online »](#)

Protein Families: Transcription Factors

### Product images:



WB Suggested Anti-TGIF2LX Antibody Titration:  
0.2-1 ug/ml; ELISA Titer: 1:62500; Positive Control:  
Hela cell lysate