

## Product datasheet for **TA341450**

### **KLF14 Rabbit Polyclonal Antibody**

#### **Product data:**

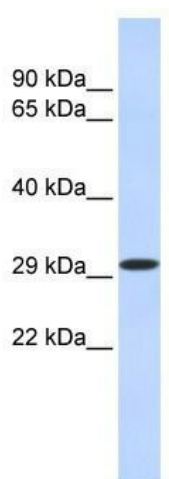
Product Type:	Primary Antibodies
Applications:	WB
Recommended Dilution:	WB
Reactivity:	Human
Host:	Rabbit
Isotype:	IgG
Clonality:	Polyclonal
Immunogen:	The immunogen for anti-KLF14 antibody: synthetic peptide directed towards the N terminal of human KLF14. Synthetic peptide located within the following region: SAAVACLDYFAAECLVSMAGAVVHRRPPDPEGAGGAAGSEVGAAHPESA
Formulation:	Liquid. Purified antibody supplied in 1x PBS buffer with 0.09% (w/v) sodium azide and 2% sucrose. <i>Note that this product is shipped as lyophilized powder to China customers.</i>
Concentration:	lot specific
Conjugation:	Unconjugated
Storage:	Store at -20°C as received.
Stability:	Stable for 12 months from date of receipt.
Predicted Protein Size:	33 kDa
Gene Name:	Kruppel-like factor 14
Database Link:	<a href="#">NP_619638</a> <a href="#">Entrez Gene 136259 Human</a> <a href="#">Q8TD94</a>
Background:	This intronless gene encodes a member of the Kruppel-like family of transcription factors. The encoded protein functions as a transcriptional co-repressor, and is induced by transforming growth factor-beta (TGF-beta) to repress TGF-beta receptor II gene expression. This gene exhibits imprinted expression from the maternal allele in embryonic and extra-embryonic tissues. [provided by RefSeq, Jul 2013]
Synonyms:	BTEB5



[View online »](#)

Note: Immunogen Sequence Homology: Dog: 100%; Human: 100%; Pig: 93%; Rabbit: 93%

### Product images:



WB Suggested Anti-KLF14 Antibody Titration: 0.2-1 ug/ml; ELISA Titer: 1:62500; Positive Control: Human brain