

Product datasheet for **TA341448**

SP140L Rabbit Polyclonal Antibody

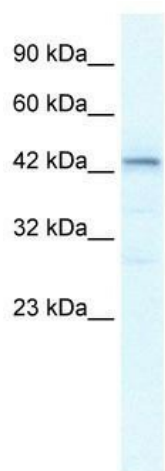
Product data:

Product Type:	Primary Antibodies
Applications:	WB
Recommended Dilution:	WB
Reactivity:	Human
Host:	Rabbit
Isotype:	IgG
Clonality:	Polyclonal
Immunogen:	The immunogen for anti-SP140L antibody: synthetic peptide directed towards the middle region of human LOC93349. Synthetic peptide located within the following region: TVDFQAPLLPVTCGGVKGILHKEKLEQGTLAKCIQTEDGKWFTPMEFEIK
Formulation:	Liquid. Purified antibody supplied in 1x PBS buffer with 0.09% (w/v) sodium azide and 2% sucrose. <i>Note that this product is shipped as lyophilized powder to China customers.</i>
Concentration:	lot specific
Conjugation:	Unconjugated
Storage:	Store at -20°C as received.
Stability:	Stable for 12 months from date of receipt.
Predicted Protein Size:	39 kDa
Gene Name:	SP140 nuclear body protein like
Database Link:	NP_612411 Entrez Gene 93349 Human Q9H930
Background:	Located on chromosome 2, The LOC93349 gene encodes a hypothetical protein with unknown function.
Synonyms:	MGC132667
Note:	Immunogen Sequence Homology: Human: 100%; Horse: 80%; Rat: 79%
Protein Families:	Druggable Genome



[View online »](#)

Product images:



WB Suggested Anti-SP140L Antibody Titration: 2.5 ug/ml; ELISA Titer: 1:1562500; Positive Control: Jurkat cell lysate