

Product datasheet for **TA341444**

BORIS (CTCFL) Rabbit Polyclonal Antibody

Product data:

Product Type:	Primary Antibodies
Applications:	WB
Recommended Dilution:	WB
Reactivity:	Human
Host:	Rabbit
Isotype:	IgG
Clonality:	Polyclonal
Immunogen:	The immunogen for anti-CTCFL antibody: synthetic peptide directed towards the N terminal of human CTCFL. Synthetic peptide located within the following region: RSDEIVLTVSNSNVVEEQEDQPTAGQADAEKAKSTKNQRKTKGAKGTFHCD
Formulation:	Liquid. Purified antibody supplied in 1x PBS buffer with 0.09% (w/v) sodium azide and 2% sucrose. <i>Note that this product is shipped as lyophilized powder to China customers.</i>
Concentration:	lot specific
Conjugation:	Unconjugated
Storage:	Store at -20°C as received.
Stability:	Stable for 12 months from date of receipt.
Predicted Protein Size:	76 kDa
Gene Name:	CCCTC-binding factor like
Database Link:	NP_542185 Entrez Gene 140690 Human Q8NI51



[View online »](#)

Background:

CCCTC-binding factor (CTCF), an 11-zinc-finger factor involved in gene regulation, utilizes different zinc fingers to bind varying DNA target sites. CTCF forms methylation-sensitive insulators that regulate X-chromosome inactivation. This gene is a paralog of CTCF and appears to be expressed primarily in the cytoplasm of spermatocytes, unlike CTCF which is expressed primarily in the nucleus of somatic cells. CTCF and the protein encoded by this gene are normally expressed in a mutually exclusive pattern that correlates with resetting of methylation marks during male germ cell differentiation. Multiple alternatively spliced transcript variants encoding different isoforms have been found for this gene. [provided by RefSeq, Jun 2012]

Synonyms:

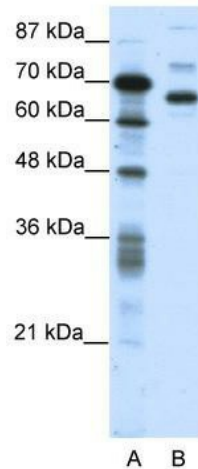
BORIS; CT27; CTCF-T; dJ579F20.2; HMGB1L1

Note:

Immunogen Sequence Homology: Human: 100%

Protein Families:

Transcription Factors

Product images:


WB Suggested Anti-CTCFL Antibody Titration: 0.2-1 ug/ml; ELISA Titer: 1:312500; Positive Control: Jurkat cell lysate. CTCFL is supported by BioGPS gene expression data to be expressed in Jurkat