

Product datasheet for **TA341443**

SP110 Rabbit Polyclonal Antibody

Product data:

Product Type:	Primary Antibodies
Applications:	WB
Recommended Dilution:	WB
Reactivity:	Human
Host:	Rabbit
Isotype:	IgG
Clonality:	Polyclonal
Immunogen:	The immunogen for anti-SP110 antibody: synthetic peptide directed towards the middle region of human SP110. Synthetic peptide located within the following region: DMRLMFRNHKTFYKASDFGQVGLDLEAEFEKDLKDVLGFHEANDGGFWTL
Formulation:	Liquid. Purified antibody supplied in 1x PBS buffer with 0.09% (w/v) sodium azide and 2% sucrose. <i>Note that this product is shipped as lyophilized powder to China customers.</i>
Concentration:	lot specific
Conjugation:	Unconjugated
Storage:	Store at -20°C as received.
Stability:	Stable for 12 months from date of receipt.
Predicted Protein Size:	81 kDa
Gene Name:	SP110 nuclear body protein
Database Link:	NP_536349 Entrez Gene 3431 Human Q9HB58



[View online »](#)

Background:

The nuclear body is a multiprotein complex that may have a role in the regulation of gene transcription. This gene is a member of the SP100/SP140 family of nuclear body proteins and encodes a leukocyte-specific nuclear body component. The protein can function as an activator of gene transcription and may serve as a nuclear hormone receptor coactivator. In addition, it has been suggested that the protein may play a role in ribosome biogenesis and in the induction of myeloid cell differentiation. Alternative splicing has been observed for this gene and three transcript variants, encoding distinct isoforms, have been identified. [provided by RefSeq, Jul 2008]

Synonyms:

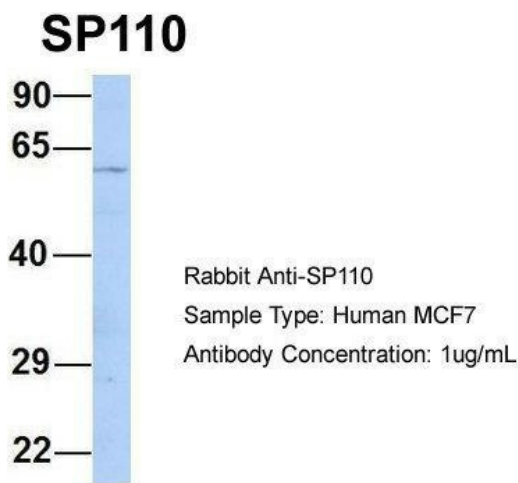
IFI41; IFI75; IPR1; VODI

Note:

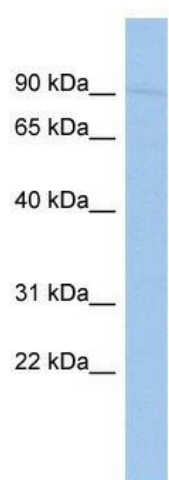
Immunogen Sequence Homology: Human: 100%

Protein Families:

Druggable Genome, Transcription Factors

Product images:


Host: Rabbit; Target Name: SP110; Sample Tissue: Human MCF7; Antibody Dilution: 1.0 ug/ml; SP110 is strongly supported by BioGPS gene expression data to be expressed in Human MCF7 cells



WB Suggested Anti-SP110 Antibody Titration: 0.2-1 ug/ml; ELISA Titer: 1:312500; Positive Control: HT1080 cell lysate. There is BioGPS gene expression data showing that SP110 is expressed in HT1080