

Product datasheet for **TA341437**

ZNF300 Rabbit Polyclonal Antibody

Product data:

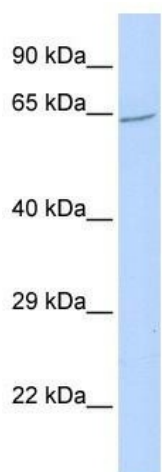
Product Type:	Primary Antibodies
Applications:	WB
Recommended Dilution:	WB
Reactivity:	Human
Host:	Rabbit
Isotype:	IgG
Clonality:	Polyclonal
Immunogen:	The immunogen for anti-ZNF300 antibody: synthetic peptide directed towards the N terminal of human ZNF300. Synthetic peptide located within the following region: DISNWYYPDEYQADGRQDRKSNLHNSQSCILGTVSFHHKILKGVTRDGSL
Formulation:	Liquid. Purified antibody supplied in 1x PBS buffer with 0.09% (w/v) sodium azide and 2% sucrose.
Concentration:	lot specific
Conjugation:	Unconjugated
Storage:	Store at -20°C as received.
Stability:	Stable for 12 months from date of receipt.
Predicted Protein Size:	69 kDa
Gene Name:	zinc finger protein 300
Database Link:	NP_443092 Entrez Gene 91975 Human Q96RE9
Background:	The protein encoded byThis gene is a C2H2-type zinc finger DNA binding protein and likely transcriptional regulator.The function ofThis protein is not yet known. Three transcript variants encoding different isoforms have been found forThis gene. [provided by RefSeq, Mar 2010]
Synonyms:	DKFZp686B24204
Note:	Immunogen Sequence Homology: Human: 100%; Dog: 93%; Bovine: 92%; Horse: 79%



[View online »](#)

Protein Families: Transcription Factors

Product images:



WB Suggested Anti-ZNF300 Antibody Titration:
0.2-1 ug/ml; ELISA Titer: 1:12500; Positive Control:
Human Liver