

Product datasheet for **TA341435**

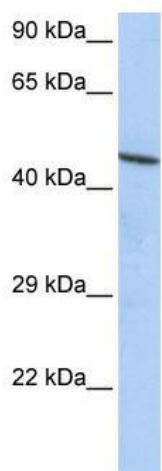
CCDC16 (ZNF830) Rabbit Polyclonal Antibody

Product data:

Product Type:	Primary Antibodies
Applications:	WB
Recommended Dilution:	WB
Reactivity:	Human
Host:	Rabbit
Isotype:	IgG
Clonality:	Polyclonal
Immunogen:	The immunogen for anti-CCDC16 antibody: synthetic peptide directed towards the N terminal of human CCDC16. Synthetic peptide located within the following region: GKQHREKVAELKGAKEASQGSSASSAPHSVKRKAPDADDQDVKRAKATLV
Formulation:	Liquid. Purified antibody supplied in 1x PBS buffer with 0.09% (w/v) sodium azide and 2% sucrose.
Concentration:	lot specific
Conjugation:	Unconjugated
Storage:	Store at -20°C as received.
Stability:	Stable for 12 months from date of receipt.
Predicted Protein Size:	42 kDa
Gene Name:	zinc finger protein 830
Database Link:	NP_443089 Entrez Gene 91603 Human Q96NB3
Background:	May act as a regulator ofThe cell cycle in embryos by participating in control of M phase.
Synonyms:	CCDC16; OMCG1
Note:	Immunogen Sequence Homology: Dog: 100%; Pig: 100%; Rat: 100%; Human: 100%; Bovine: 100%; Guinea pig: 100%; Mouse: 93%; Horse: 92%



[View online »](#)

Product images:

WB Suggested Anti-CCDC16 Antibody Titration:
0.2-1 ug/ml; ELISA Titer: 1:62500; Positive Control:
HepG2 cell lysate