

Product datasheet for **TA341431**

ZNF670 Rabbit Polyclonal Antibody

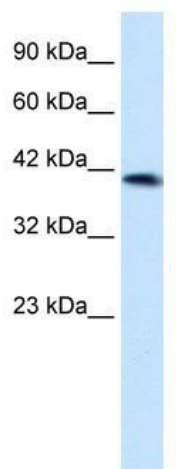
Product data:

Product Type:	Primary Antibodies
Applications:	WB
Recommended Dilution:	WB
Reactivity:	Human
Host:	Rabbit
Isotype:	IgG
Clonality:	Polyclonal
Immunogen:	The immunogen for anti-ZNF670 antibody: synthetic peptide directed towards the N terminal of human ZNF670. Synthetic peptide located within the following region: EDQNIQDDFKNPGRNLSSHVVERLFEIKEGSQYGETFSQDSNLNLNKKVS
Formulation:	Liquid. Purified antibody supplied in 1x PBS buffer with 0.09% (w/v) sodium azide and 2% sucrose.
Concentration:	lot specific
Conjugation:	Unconjugated
Storage:	Store at -20°C as received.
Stability:	Stable for 12 months from date of receipt.
Predicted Protein Size:	45 kDa
Gene Name:	zinc finger protein 670
Database Link:	NP_149990 Entrez Gene 93474 Human Q9BS34
Background:	May be involved in transcriptional regulation.
Synonyms:	FLJ12606; MGC12466
Note:	Immunogen Sequence Homology: Human: 100%
Protein Families:	Transcription Factors



[View online »](#)

Product images:



WB Suggested Anti-ZNF670 Antibody Titration:
1.25 ug/ml; ELISA Titer: 1:312500; Positive
Control: HepG2 cell lysate