

Product datasheet for **TA341428**

HSFY1 Rabbit Polyclonal Antibody

Product data:

Product Type:	Primary Antibodies
Applications:	WB
Recommended Dilution:	WB
Reactivity:	Human
Host:	Rabbit
Isotype:	IgG
Clonality:	Polyclonal
Immunogen:	The immunogen for anti-HSFY1 antibody: synthetic peptide directed towards the N terminal of human HSFY1. Synthetic peptide located within the following region: SWDENGTCIVINEELFKKEILETKAPYRIFQTDIAKSFVRQLNLYGFSKI
Formulation:	Liquid. Purified antibody supplied in 1x PBS buffer with 0.09% (w/v) sodium azide and 2% sucrose. <i>Note that this product is shipped as lyophilized powder to China customers.</i>
Concentration:	lot specific
Conjugation:	Unconjugated
Storage:	Store at -20°C as received.
Stability:	Stable for 12 months from date of receipt.
Predicted Protein Size:	45 kDa
Gene Name:	heat shock transcription factor, Y-linked 1
Database Link:	NP_149099 Entrez Gene 86614 Human Q96LI6

Background: This gene encodes a member of the heat shock factor (HSF) family of transcriptional activators for heat shock proteins. This gene is a candidate gene for azoospermia, since it localizes to a region of chromosome Y that is sometimes deleted in infertile males. The genome has two identical copies of this gene within a palindromic region; this record represents the more centromeric copy. Alternative splicing results in multiple transcript variants encoding distinct isoforms. [provided by RefSeq, Jul 2008]



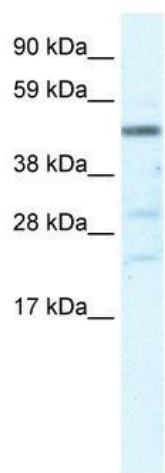
[View online »](#)

Synonyms: HSF2L; HSFY

Note: Immunogen Sequence Homology: Human: 100%; Dog: 79%; Rat: 79%; Mouse: 79%; Bovine: 79%

Protein Families: Transcription Factors

Product images:



WB Suggested Anti-HSFY1 Antibody Titration: 5.0 ug/ml; ELISA Titer: 1:62500; Positive Control: Human Liver