

Product datasheet for **TA341426**

DMRTB1 Rabbit Polyclonal Antibody

Product data:

Product Type:	Primary Antibodies
Applications:	WB
Recommended Dilution:	WB
Reactivity:	Human
Host:	Rabbit
Isotype:	IgG
Clonality:	Polyclonal
Immunogen:	The immunogen for anti-DMRTB1 antibody: synthetic peptide directed towards the middle region of human DMRTB1. Synthetic peptide located within the following region: LGYLDAPPGVPLQQGFRHVSRSQYQGGLVSEPGGDFQPSYYLPPPPPL
Formulation:	Liquid. Purified antibody supplied in 1x PBS buffer with 0.09% (w/v) sodium azide and 2% sucrose.
Concentration:	lot specific
Purification:	Affinity Purified
Conjugation:	Unconjugated
Storage:	Store at -20°C as received.
Stability:	Stable for 12 months from date of receipt.
Predicted Protein Size:	36 kDa
Gene Name:	DMRT like family B with proline rich C-terminal 1
Database Link:	NP_149056 Entrez Gene 63948 Human Q96MA1

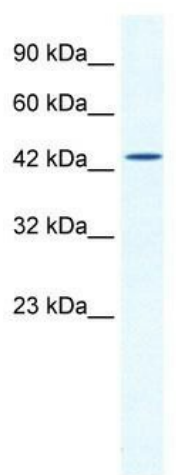


Background: Located on chromosome 1, This gene encodes for The DMRT-like family B with proline-rich C-terminal, 1 protein.

Synonyms: 1; DMRT-like family B with proline-rich C-terminal; FLJ40434; OTTHUMP00000009751

Note: Immunogen Sequence Homology: Human: 100%; Horse: 92%; Bovine: 86%; Dog: 79%

Product images:



WB Suggested Anti-DMRTB1 Antibody Titration:
2.5 ug/ml; ELISA Titer: 1:62500; Positive Control:
HepG2 cell lysate