

Product datasheet for **TA341425**

DMRTC2 Rabbit Polyclonal Antibody

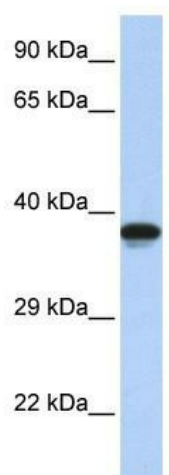
Product data:

Product Type:	Primary Antibodies
Applications:	WB
Recommended Dilution:	WB
Reactivity:	Human
Host:	Rabbit
Isotype:	IgG
Clonality:	Polyclonal
Immunogen:	The immunogen for anti-DMRTC2 antibody: synthetic peptide directed towards the N terminal of human DMRTC2. Synthetic peptide located within the following region: VLILERRVMMAAQVALRRQQAQLKKHLMRRGEASPKAPNHFRKGTTPQ
Formulation:	Liquid. Purified antibody supplied in 1x PBS buffer with 0.09% (w/v) sodium azide and 2% sucrose. <i>Note that this product is shipped as lyophilized powder to China customers.</i>
Concentration:	lot specific
Conjugation:	Unconjugated
Storage:	Store at -20°C as received.
Stability:	Stable for 12 months from date of receipt.
Predicted Protein Size:	39 kDa
Gene Name:	DMRT like family C2
Database Link:	NP_001035373 Entrez Gene 63946 Human Q8IXT2
Background:	DMRTC2 belongs to The DMRT family. It may be involved in sexual development.
Synonyms:	DMRT-like family C2
Note:	Immunogen Sequence Homology: Human: 100%
Protein Families:	Transcription Factors



[View online »](#)

Product images:



WB Suggested Anti-DMRTC2 Antibody Titration:
0.2-1 ug/ml; ELISA Titer: 1:12500; Positive Control:
Jurkat cell lysate