

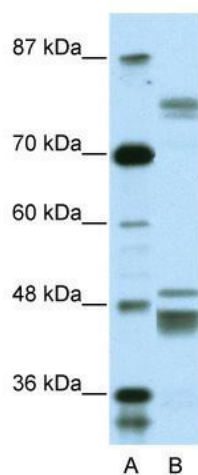
Product datasheet for **TA341420**

ZNF607 Rabbit Polyclonal Antibody

Product data:

| | |
|-------------------------|--|
| Product Type: | Primary Antibodies |
| Applications: | WB |
| Recommended Dilution: | WB |
| Reactivity: | Human |
| Host: | Rabbit |
| Isotype: | IgG |
| Clonality: | Polyclonal |
| Immunogen: | The immunogen for anti-ZNF607 antibody: synthetic peptide directed towards the middle region of human ZNF607. Synthetic peptide located within the following region: KECGKGFTCRYQLTMHQRIYSGEKHYECKENGAEAFSSGHQLTAPHTFESV |
| Formulation: | Liquid. Purified antibody supplied in 1x PBS buffer with 0.09% (w/v) sodium azide and 2% sucrose. |
| Concentration: | lot specific |
| Conjugation: | Unconjugated |
| Storage: | Store at -20°C as received. |
| Stability: | Stable for 12 months from date of receipt. |
| Predicted Protein Size: | 81 kDa |
| Gene Name: | zinc finger protein 607 |
| Database Link: | NP_116078 Entrez Gene 84775 Human Q96SK3 |
| Background: | May be involved in transcriptional regulation. |
| Synonyms: | FLJ14802; MGC13071 |
| Note: | Immunogen Sequence Homology: Human: 100% |
| Protein Families: | Transcription Factors |


[View online »](#)

Product images:


WB Suggested Anti-ZNF607 Antibody Titration:
0.2-1 ug/ml; ELISA Titer: 1:1562500; Positive
Control: Jurkat cell lysate