

Product datasheet for **TA341416**

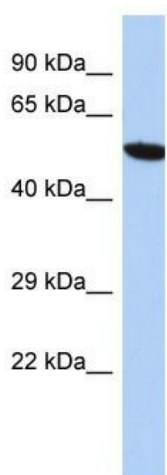
ZNF 559 (ZNF559) Rabbit Polyclonal Antibody

Product data:

Product Type:	Primary Antibodies
Applications:	WB
Recommended Dilution:	WB
Reactivity:	Human
Host:	Rabbit
Isotype:	IgG
Clonality:	Polyclonal
Immunogen:	The immunogen for Anti-ZNF559 antibody is: synthetic peptide directed towards the N-terminal region of Human ZNF559. Synthetic peptide located within the following region: QCEKAFRKPSIFTLHKKTDIGEELPNCNQ CETAFSQHLHLVCKKTSQNLH
Formulation:	Liquid. Purified antibody supplied in 1x PBS buffer with 0.09% (w/v) sodium azide and 2% sucrose. <i>Note that this product is shipped as lyophilized powder to China customers.</i>
Concentration:	lot specific
Conjugation:	Unconjugated
Storage:	Store at -20°C as received.
Stability:	Stable for 12 months from date of receipt.
Predicted Protein Size:	59 kDa
Gene Name:	zinc finger protein 559
Database Link:	NP_115886 Entrez Gene 84527 Human Q9BR84
Background:	May be involved in transcriptional regulation.
Synonyms:	NBLA00121
Note:	Immunogen Sequence Homology: Human: 100%
Protein Families:	Transcription Factors



[View online »](#)

Product images:

Host: Rabbit

Target Name: ZNF559

Sample Tissue: HepG2 Cell Lysate

Antibody Dilution: 1.0 µg/ml

Host: Rabbit; Target Name: ZNF559; Sample
Tissue: HepG2 Whole Cell lysates; Antibody
Dilution: 1.0 ug/ml