

Product datasheet for **TA341415**

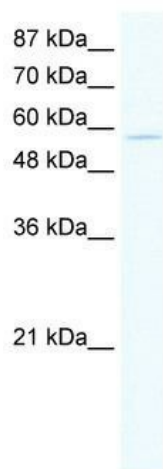
ZNF 559 (ZNF559) Rabbit Polyclonal Antibody

Product data:

Product Type:	Primary Antibodies
Applications:	WB
Recommended Dilution:	WB
Reactivity:	Human
Host:	Rabbit
Isotype:	IgG
Clonality:	Polyclonal
Immunogen:	The immunogen for anti-ZNF559 antibody: synthetic peptide directed towards the N terminal of human ZNF559. Synthetic peptide located within the following region: LPSSSHLRECVRIYGGGERPYTHKEYVETFSHSTALFVHMQTQDGEKFYEC
Formulation:	Liquid. Purified antibody supplied in 1x PBS buffer with 0.09% (w/v) sodium azide and 2% sucrose. <i>Note that this product is shipped as lyophilized powder to China customers.</i>
Concentration:	lot specific
Conjugation:	Unconjugated
Storage:	Store at -20°C as received.
Stability:	Stable for 12 months from date of receipt.
Predicted Protein Size:	62 kDa
Gene Name:	zinc finger protein 559
Database Link:	NP_115886 Entrez Gene 84527 Human Q9BR84
Background:	May be involved in transcriptional regulation.
Synonyms:	NBLA00121
Note:	Immunogen Sequence Homology: Human: 100%
Protein Families:	Transcription Factors



[View online »](#)

Product images:

WB Suggested Anti-ZNF559 Antibody Titration:
5.0 ug/ml; ELISA Titer: 1:1562500; Positive
Control: Jurkat cell lysate