

## Product datasheet for **TA341411**

### ZNF323 (ZSCAN31) Rabbit Polyclonal Antibody

#### Product data:

Product Type:	Primary Antibodies
Applications:	WB
Recommended Dilution:	WB
Reactivity:	Human
Host:	Rabbit
Isotype:	IgG
Clonality:	Polyclonal
Immunogen:	The immunogen for anti-ZNF323 antibody: synthetic peptide directed towards the middle region of human ZNF323. Synthetic peptide located within the following region: QEILKEMEHLGDSKLQRDVSLDSKYRETCKRDSKA EKQQA HSTGERRHRC
Formulation:	Liquid. Purified antibody supplied in 1x PBS buffer with 0.09% (w/v) sodium azide and 2% sucrose. <i>Note that this product is shipped as lyophilized powder to China customers.</i>
Concentration:	lot specific
Conjugation:	Unconjugated
Storage:	Store at -20°C as received.
Stability:	Stable for 12 months from date of receipt.
Predicted Protein Size:	47 kDa
Gene Name:	zinc finger and SCAN domain containing 31
Database Link:	<a href="#">NP_665916</a> <a href="#">Entrez Gene 64288 Human</a> <a href="#">Q96LW9</a>
Background:	ZNF323 is a member of the subfamily of C2H2 Kruppel-like zinc finger transcription factors that have a SCAN box domain (Pi et al., 2002 [PubMed 12147252]). [supplied by OMIM, Mar 2008]. Transcript Variant: This variant (1) encodes isoform 1. Variants 1, 4 and 7 encode the same protein. ##Evidence-Data-START## Transcript exon combination :: BC008490.1 [ECO:0000332] RNAseq introns :: single sample supports all introns ERS025082, ERS025083 [ECO:0000348] ##Evidence-Data-END## COMPLETENESS: complete on the 3' end.



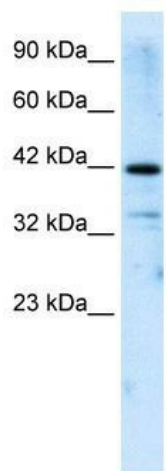
[View online »](#)

**Synonyms:** dj874C20.2; FLJ23407; ZNF20-Lp; ZNF310P

**Note:** Immunogen Sequence Homology: Human: 100%

**Protein Families:** Transcription Factors

**Product images:**



WB Suggested Anti-ZNF323 Antibody Titration:  
2.5 ug/ml; ELISA Titer: 1:1562500; Positive  
Control: Jurkat cell lysate