

## Product datasheet for **TA341410**

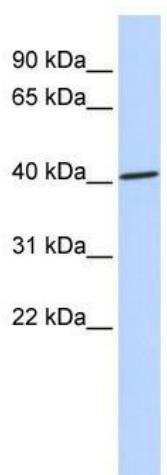
### ZNF696 Rabbit Polyclonal Antibody

#### Product data:

Product Type:	Primary Antibodies
Applications:	WB
Recommended Dilution:	WB
Reactivity:	Human
Host:	Rabbit
Isotype:	IgG
Clonality:	Polyclonal
Immunogen:	The immunogen for anti-ZNF696 antibody: synthetic peptide directed towards the N terminal of human ZNF696. Synthetic peptide located within the following region: EPGGPTGAKESSTLMESLAAYKAAFLAQAPSGSRSAEVQAAQSTEPAAE
Formulation:	Liquid. Purified antibody supplied in 1x PBS buffer with 0.09% (w/v) sodium azide and 2% sucrose.
Concentration:	lot specific
Conjugation:	Unconjugated
Storage:	Store at -20°C as received.
Stability:	Stable for 12 months from date of receipt.
Predicted Protein Size:	40 kDa
Gene Name:	zinc finger protein 696
Database Link:	<a href="#">NP_112157</a> <a href="#">Entrez Gene 79943 Human</a> <a href="#">Q9H7X3</a>
Background:	May be involved in transcriptional regulation.
Synonyms:	FLJ14129
Note:	Immunogen Sequence Homology: Human: 100%



[View online »](#)

**Product images:**

WB Suggested Anti-ZNF696 Antibody Titration:  
0.2-1 ug/ml; ELISA Titer: 1:312500; Positive  
Control: 721\_B cell lysate ZNF696 is supported by  
BioGPS gene expression data to be expressed in  
721\_B