

## Product datasheet for **TA341406**

### APOL6 Rabbit Polyclonal Antibody

#### Product data:

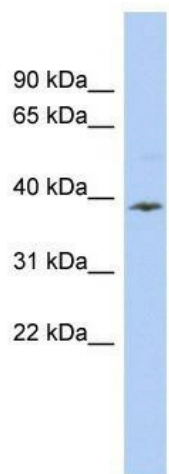
Product Type:	Primary Antibodies
Applications:	WB
Recommended Dilution:	WB
Reactivity:	Human
Host:	Rabbit
Isotype:	IgG
Clonality:	Polyclonal
Immunogen:	The immunogen for anti-APOL6 antibody: synthetic peptide directed towards the middle region of human APOL6. Synthetic peptide located within the following region: LLLSTAGQGLATAAGVTSIVSGTLERSKNKEAQAEDILPTYDQEDRED
Formulation:	Liquid. Purified antibody supplied in 1x PBS buffer with 0.09% (w/v) sodium azide and 2% sucrose. <i>Note that this product is shipped as lyophilized powder to China customers.</i>
Concentration:	lot specific
Purification:	Affinity Purified
Conjugation:	Unconjugated
Storage:	Store at -20°C as received.
Stability:	Stable for 12 months from date of receipt.
Predicted Protein Size:	38 kDa
Gene Name:	apolipoprotein L6
Database Link:	<a href="#">NP_085144</a> <a href="#">Entrez Gene 80830 Human</a> <a href="#">Q9BWW8</a>
Background:	This gene is a member of the apolipoprotein L gene family. The encoded protein is found in the cytoplasm, where it may affect the movement of lipids or allow the binding of lipids to organelles. [provided by RefSeq, Jul 2008]
Synonyms:	APOL-VI; APOLVI



[View online »](#)

Note: Immunogen Sequence Homology: Human: 100%

### Product images:



WB Suggested Anti-APOL6 Antibody Titration: 0.2-1 ug/ml; ELISA Titer: 1:62500; Positive Control: COLO205 cell lysate APOL6 is supported by BioGPS gene expression data to be expressed in COLO205