

## Product datasheet for **TA341404**

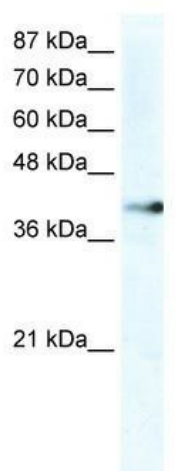
### ZNF 556 (ZNF556) Rabbit Polyclonal Antibody

#### Product data:

Product Type:	Primary Antibodies
Applications:	WB
Recommended Dilution:	WB
Reactivity:	Human
Host:	Rabbit
Isotype:	IgG
Clonality:	Polyclonal
Immunogen:	The immunogen for anti-ZNF556 antibody: synthetic peptide directed towards the C terminal of human ZNF556. Synthetic peptide located within the following region: KAFGWPSLLHKHARTHAKKKPVSGGSVGKSSARPRPSTDVKSQTREKVYK
Formulation:	Liquid. Purified antibody supplied in 1x PBS buffer with 0.09% (w/v) sodium azide and 2% sucrose.
Concentration:	lot specific
Conjugation:	Unconjugated
Storage:	Store at -20°C as received.
Stability:	Stable for 12 months from date of receipt.
Predicted Protein Size:	52 kDa
Gene Name:	zinc finger protein 556
Database Link:	<a href="#">NP_079243</a> <a href="#">Entrez Gene 80032 Human</a> <a href="#">Q9HAH1</a>
Background:	May be involved in transcriptional regulation.
Synonyms:	FLJ11637
Note:	Immunogen Sequence Homology: Human: 100%
Protein Families:	Transcription Factors



[View online »](#)

**Product images:**


WB Suggested Anti-ZNF556 Antibody Titration:  
 2.5 ug/ml; ELISA Titer: 1:312500; Positive Control:  
 HepG2 cell lysate ZNF556 is supported by BioGPS  
 gene expression data to be expressed in HepG2