

Product datasheet for **TA341400**

ZNF671 Rabbit Polyclonal Antibody

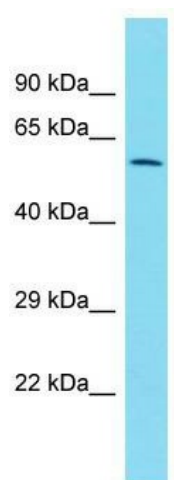
Product data:

Product Type:	Primary Antibodies
Applications:	WB
Recommended Dilution:	WB
Reactivity:	Human
Host:	Rabbit
Isotype:	IgG
Clonality:	Polyclonal
Immunogen:	The immunogen for Anti-ZNF671 antibody is: synthetic peptide directed towards the C-terminal region of Human ZNF671. Synthetic peptide located within the following region: GKAFTQRPNLIRHWKVHTGERPYVCSECGREFIRKQTLVLHQRVHAGEKL
Formulation:	Liquid. Purified antibody supplied in 1x PBS buffer with 0.09% (w/v) sodium azide and 2% sucrose.
Concentration:	lot specific
Conjugation:	Unconjugated
Storage:	Store at -20°C as received.
Stability:	Stable for 12 months from date of receipt.
Predicted Protein Size:	61 kDa
Gene Name:	zinc finger protein 671
Database Link:	NP_079109 Entrez Gene 79891 Human Q8TAW3
Background:	May be involved in transcriptional regulation.
Synonyms:	FLJ23506
Note:	Immunogen Sequence Homology: Human: 100%; Pig: 92%; Horse: 92%; Bovine: 85%; Dog: 83%; Rat: 83%; Mouse: 83%; Rabbit: 83%; Guinea pig: 83%
Protein Families:	Transcription Factors



[View online »](#)

Product images:



Host: Rabbit; Target Name: ZNF671; Sample
Tissue: Uterus Tumor lysates; Antibody Dilution:
1.0 ug/ml