

Product datasheet for **TA341397**

ZNF665 Rabbit Polyclonal Antibody

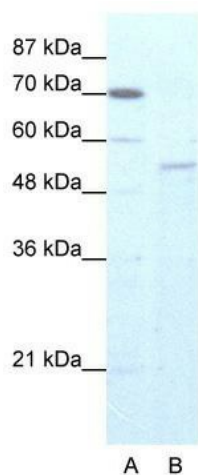
Product data:

Product Type:	Primary Antibodies
Applications:	WB
Recommended Dilution:	WB
Reactivity:	Human
Host:	Rabbit
Isotype:	IgG
Clonality:	Polyclonal
Immunogen:	The immunogen for anti-ZNF665 antibody: synthetic peptide directed towards the N terminal of human ZNF665. Synthetic peptide located within the following region: CGKAFTVRSNLTIHQVIHTGKPYKCNCEGKVFQSQPSNLAGHQRIHTGK
Formulation:	Liquid. Purified antibody supplied in 1x PBS buffer with 0.09% (w/v) sodium azide and 2% sucrose. <i>Note that this product is shipped as lyophilized powder to China customers.</i>
Concentration:	lot specific
Conjugation:	Unconjugated
Storage:	Store at -20°C as received.
Stability:	Stable for 12 months from date of receipt.
Predicted Protein Size:	78 kDa
Gene Name:	zinc finger protein 665
Database Link:	NP_079009 Entrez Gene 79788 Human Q9H7R5
Background:	May be involved in transcriptional regulation.
Synonyms:	ZFP160L
Note:	Immunogen Sequence Homology: Human: 100%; Rat: 86%; Mouse: 86%; Rabbit: 85%; Dog: 79%; Pig: 79%; Horse: 79%; Bovine: 79%; Guinea pig: 79%



[View online »](#)

Product images:



WB Suggested Anti-ZNF665 Antibody Titration:
5.0 ug/ml; ELISA Titer: 1:12500; Positive Control:
HepG2 cell lysate