

Product datasheet for **TA341386**

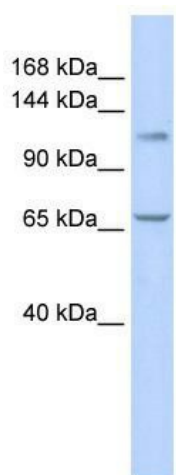
ZBTB10 Rabbit Polyclonal Antibody

Product data:

Product Type:	Primary Antibodies
Applications:	WB
Recommended Dilution:	WB
Reactivity:	Human
Host:	Rabbit
Isotype:	IgG
Clonality:	Polyclonal
Immunogen:	The immunogen for anti-ZBTB10 antibody: synthetic peptide directed towards the middle region of human ZBTB10. Synthetic peptide located within the following region: GGQEGVDQGQDTEFPRDEEYEENEVGEADEELVDDGEDQNDPSRWDESGE
Formulation:	Liquid. Purified antibody supplied in 1x PBS buffer with 0.09% (w/v) sodium azide and 2% sucrose. <i>Note that this product is shipped as lyophilized powder to China customers.</i>
Concentration:	lot specific
Conjugation:	Unconjugated
Storage:	Store at -20°C as received.
Stability:	Stable for 12 months from date of receipt.
Predicted Protein Size:	92 kDa
Gene Name:	zinc finger and BTB domain containing 10
Database Link:	NP_076418 Entrez Gene 65986 Human Q96DT7
Background:	May be involved in transcriptional regulation.
Synonyms:	RINZF
Note:	Immunogen Sequence Homology: Dog: 100%; Horse: 100%; Human: 100%; Rabbit: 100%; Pig: 93%; Rat: 93%; Guinea pig: 93%; Mouse: 85%; Bovine: 79%
Protein Families:	Transcription Factors



[View online »](#)

Product images:

WB Suggested Anti-ZBTB10 Antibody Titration:
0.2-1 ug/ml; ELISA Titer: 1:312500; Positive
Control: 721_B cell lysate ZBTB10 is supported by
BioGPS gene expression data to be expressed in
721_B