

Product datasheet for **TA341385**

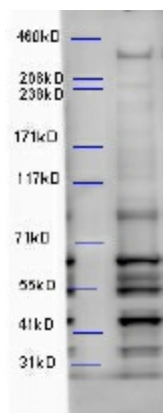
WDFY3 Goat Polyclonal Antibody

Product data:

Product Type:	Primary Antibodies
Applications:	WB
Recommended Dilution:	WB: 4-6ug/mL
Reactivity:	Mouse (Expected from sequence similarity: Human, Rat, Cow)
Host:	Goat
Clonality:	Polyclonal
Immunogen:	Peptide with sequence C-SPERSTRQQKEFQT, from the internal region of the protein sequence according to NP_055806.2.
Formulation:	Tris saline, 0.02% sodium azide, pH7.3 with 0.5% bovine serum albumin.
Concentration:	lot specific
Purification:	Purified from goat serum by ammonium sulphate precipitation followed by antigen affinity chromatography using the immunizing peptide.
Conjugation:	Unconjugated
Storage:	Store at -20°C as received.
Stability:	Stable for 12 months from date of receipt.
Predicted Protein Size:	395 kDa
Gene Name:	WD repeat and FYVE domain containing 3
Database Link:	NP_055806 Entrez Gene 72145 Mouse Entrez Gene 305164 Rat Entrez Gene 23001 Human Q8IZQ1
Synonyms:	ALFY; ZFYVE25



[View online »](#)

Product images:

TA341385 (5ug/ml) staining of Mouse Brain lysate (35ug protein in RIPA buffer). Primary incubation was 1 hour. Detected by chemiluminescence.