

## Product datasheet for **TA341381**

### Galectin 3 (LGALS3) Goat Polyclonal Antibody

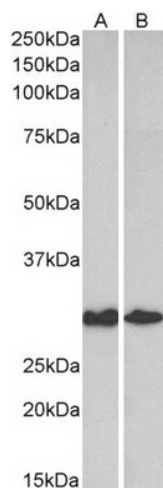
#### Product data:

Product Type:	Primary Antibodies
Applications:	WB
Recommended Dilution:	WB: 0.3-1ug/mL
Reactivity:	Human, Mouse (Expected from sequence similarity: Rat)
Host:	Goat
Clonality:	Polyclonal
Immunogen:	Peptide with sequence CNTKLDNNWGREERQ, from the internal region of the protein sequence according to NP_002297.2.
Formulation:	Tris saline, 0.02% sodium azide, pH7.3 with 0.5% bovine serum albumin.
Concentration:	lot specific
Purification:	Purified from goat serum by ammonium sulphate precipitation followed by antigen affinity chromatography using the immunizing peptide.
Conjugation:	Unconjugated
Storage:	Store at -20°C as received.
Stability:	Stable for 12 months from date of receipt.
Predicted Protein Size:	26.2 kDa
Gene Name:	lectin, galactoside binding soluble 3
Database Link:	<a href="#">NP_002297</a> <a href="#">Entrez Gene 16854 Mouse</a> <a href="#">Entrez Gene 83781 Rat</a> <a href="#">Entrez Gene 3958 Human</a> <a href="#">P17931</a>
Synonyms:	CBP35; GAL3; GALBP; GALIG; L31; LGALS2; MAC2
Protein Families:	Secreted Protein



[View online »](#)

## Product images:



TA341381 (0.3ug/ml) staining of Human (A) and Mouse (B) Colon lysates (35ug protein in RIPA buffer). Primary incubation was 1 hour. Detected by chemiluminescence.