

## Product datasheet for **TA341380**

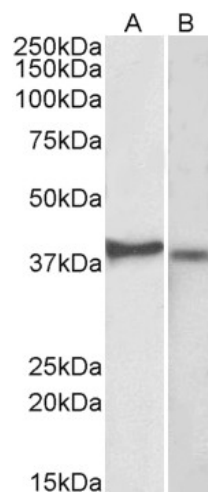
### CX3CR1 Goat Polyclonal Antibody

#### Product data:

Product Type:	Primary Antibodies
Applications:	WB
Recommended Dilution:	WB: 1-3ug/mL
Reactivity:	Human
Host:	Goat
Clonality:	Polyclonal
Immunogen:	Peptide with sequence C-DQFPESVTENFEYD, from the internal region (near N terminus) of the protein sequence according to NP_001164645.1; NP_001328.1.
Formulation:	Tris saline, 0.02% sodium azide, pH7.3 with 0.5% bovine serum albumin.
Concentration:	lot specific
Purification:	Purified from goat serum by ammonium sulphate precipitation followed by antigen affinity chromatography using the immunizing peptide.
Conjugation:	Unconjugated
Storage:	Store at -20°C as received.
Stability:	Stable for 12 months from date of receipt.
Predicted Protein Size:	40.4 kDa
Gene Name:	C-X3-C motif chemokine receptor 1
Database Link:	<a href="#">NP_001328</a> <a href="#">Entrez Gene 1524 Human</a> <a href="#">P49238</a>
Synonyms:	CCRL1; CMKBRL1; CMKDR1; GPR13; GPRV28; V28
Protein Families:	Druggable Genome, GPCR, Transmembrane
Protein Pathways:	Chemokine signaling pathway, Cytokine-cytokine receptor interaction



[View online »](#)

**Product images:**

TA341380 (2ug/ml) staining of Kelly (A) and U251-MG (B) lysates (35ug protein in RIPA buffer). Primary incubation was 1 hour. Detected by chemiluminescence.