

Product datasheet for **TA341370**

CCR2 Rabbit Polyclonal Antibody

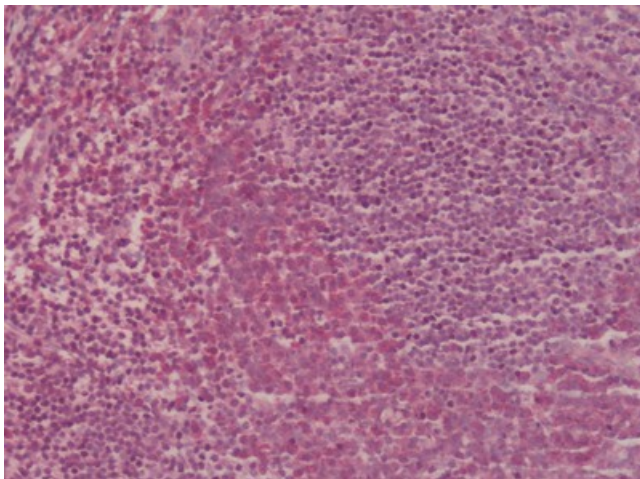
Product data:

Product Type:	Primary Antibodies
Applications:	IHC
Recommended Dilution:	IHC-P (15 - 20 µg/ml)
Reactivity:	Human (Predicted: Monkey)
Host:	Rabbit
Clonality:	Polyclonal
Immunogen:	CCR2 antibody was raised against synthetic 20 amino acid peptide from 2nd extracellular domain of human CCR2. Percent identity with other species by BLAST analysis: Human, Gorilla (100%); Gibbon (95%); Monkey (90%).
Formulation:	PBS, 0.1% sodium azide.
Concentration:	lot specific
Purification:	Immunoaffinity purified
Conjugation:	Unconjugated
Storage:	Store at -20°C as received.
Stability:	Stable for 12 months from date of receipt.
Database Link:	NP_000639 Entrez Gene 1231
Synonyms:	CC-CKR-2; CCR2A; CCR2B; CD192; CKR2; CKR2A; CKR2B; CMKBR2; MCP-1-R
Protein Families:	Druggable Genome, GPCR, Transmembrane



[View online »](#)

Product images:



Human Tonsil: Formalin-Fixed, Paraffin-Embedded (FFPE)