

## Product datasheet for **TA341368**

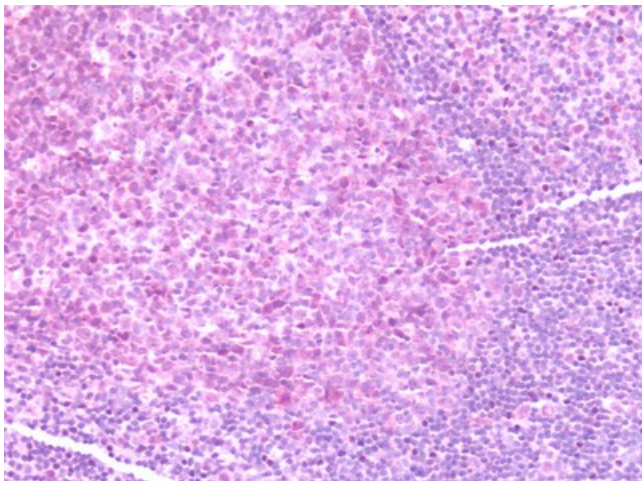
### CCR7 Rabbit Polyclonal Antibody

#### Product data:

Product Type:	Primary Antibodies
Applications:	IHC
Recommended Dilution:	IHC-P (10 - 20 µg/ml)
Reactivity:	Human
Host:	Rabbit
Clonality:	Polyclonal
Immunogen:	CCR7 antibody was raised against synthetic 16 amino acid peptide from 1st extracellular domain of human CCR7. Percent identity with other species by BLAST analysis: Human, Gorilla, Gibbon, Monkey (100%); Bovine, Pig (94%); Marmoset, Elephant, Bat, Horse, Rabbit (88%); Panda, Dog (81%).
Formulation:	PBS, 0.1% sodium azide.
Concentration:	lot specific
Purification:	Immunoaffinity purified
Conjugation:	Unconjugated
Storage:	Store at -20°C as received.
Stability:	Stable for 12 months from date of receipt.
Gene Name:	C-C motif chemokine receptor 7
Database Link:	<a href="#">NP_001829</a> <a href="#">Entrez Gene 1236 Human</a> <a href="#">P32248</a>
Synonyms:	BLR2; CD197; CDw197; CMKBR7; EB11
Protein Families:	Druggable Genome, GPCR, Transmembrane
Protein Pathways:	Chemokine signaling pathway, Cytokine-cytokine receptor interaction



[View online »](#)

**Product images:**

Human Tonsil: Formalin-Fixed, Paraffin-Embedded (FFPE)