

Product datasheet for **TA341367**

P2RY5 (LPAR6) Rabbit Polyclonal Antibody

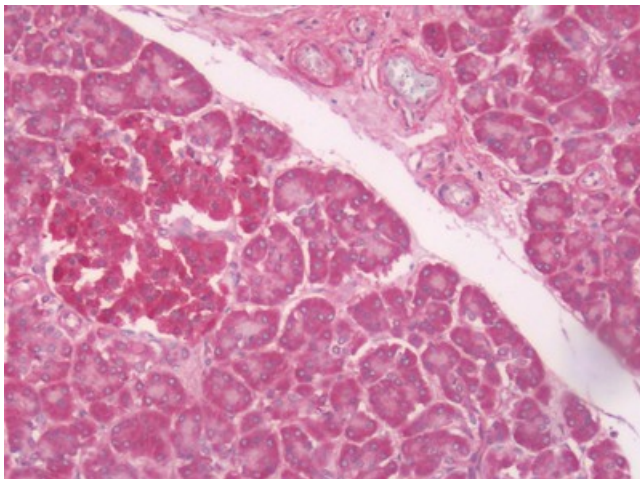
Product data:

Product Type:	Primary Antibodies
Applications:	IHC
Recommended Dilution:	IHC-P (15 - 20 µg/ml)
Reactivity:	Human
Host:	Rabbit
Clonality:	Polyclonal
Immunogen:	LPAR6 / P2RY5 / P2Y5 antibody was raised against synthetic 17 amino acid peptide from C-terminus of human LPAR6 / P2RY5. Percent identity with other species by BLAST analysis: Human, Gorilla, Gibbon, Mouse, Hamster, Elephant (100%); Monkey, Rat, Panda, Bovine, Rabbit (94%); Horse (88%).
Formulation:	PBS, 0.1% sodium azide.
Concentration:	lot specific
Purification:	Immunoaffinity purified
Conjugation:	Unconjugated
Storage:	Store at -20°C as received.
Stability:	Stable for 12 months from date of receipt.
Gene Name:	lysophosphatidic acid receptor 6
Database Link:	NP_001155969 Entrez Gene 10161 Human P43657
Synonyms:	ARWH1; HYPT8; LAH3; P2RY5; P2Y5
Protein Families:	Druggable Genome, GPCR, Transmembrane
Protein Pathways:	Neuroactive ligand-receptor interaction



[View online »](#)

Product images:



Human Pancreas: Formalin-Fixed, Paraffin-Embedded (FFPE)