

Product datasheet for **TA341362**

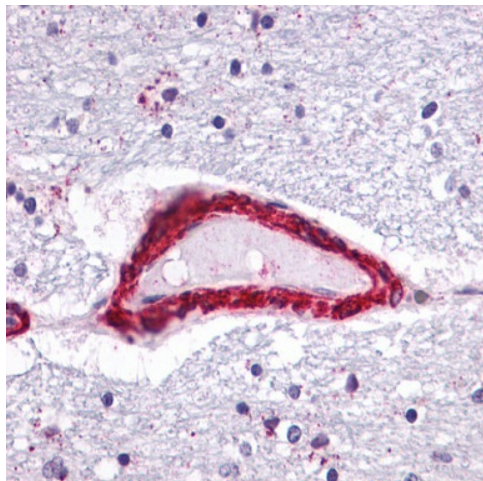
APJ Receptor (APLNR) Rabbit Polyclonal Antibody

Product data:

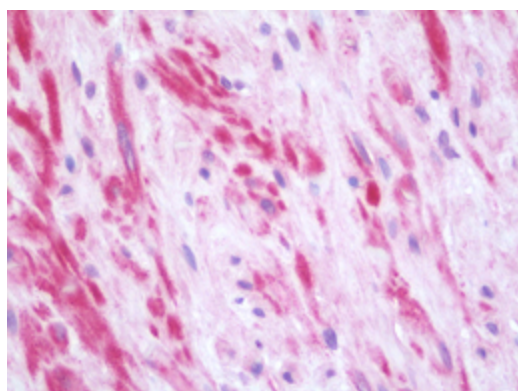
Product Type:	Primary Antibodies
Applications:	IHC
Recommended Dilution:	IHC-P (20 µg/ml)
Reactivity:	Human
Host:	Rabbit
Clonality:	Polyclonal
Immunogen:	APLNR/ Apelin Receptor / APJ antibody was raised against synthetic 20 amino acid peptide from 3rd cytoplasmic domain of human Apelin Receptor. Percent identity with other species by BLAST analysis: Human, Gorilla, Orangutan, Gibbon, Monkey, Marmoset, Mouse, Rat, Hamster, Panda, Bat, Horse, Rabbit (100%); Elephant (95%); Platypus (90%).
Formulation:	PBS, 0.1% sodium azide.
Concentration:	lot specific
Purification:	Immunoaffinity purified
Conjugation:	Unconjugated
Storage:	Store at -20°C as received.
Stability:	Stable for 12 months from date of receipt.
Gene Name:	apelin receptor
Database Link:	NP_005152 Entrez Gene 187 Human P35414
Synonyms:	AGTRL1; APJ; APJR; HG11
Protein Families:	Druggable Genome, GPCR, Transmembrane
Protein Pathways:	Neuroactive ligand-receptor interaction



[View online »](#)

Product images:

Anti-APLNR/ Apelin Receptor / APJ antibody IHC of human brain vessel. Immunohistochemistry of formalin-fixed, paraffin-embedded tissue after heat-induced antigen retrieval.



Human Prostate: Formalin-Fixed, Paraffin-Embedded (FFPE)