

Product datasheet for **TA341359**

SGK3 Rabbit Polyclonal Antibody

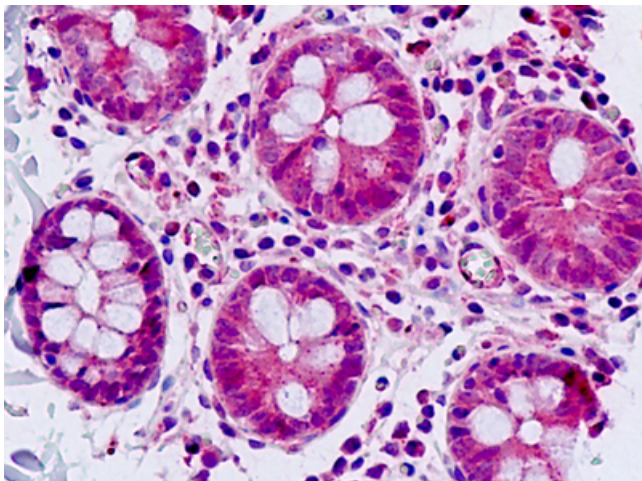
Product data:

Product Type:	Primary Antibodies
Applications:	IHC
Recommended Dilution:	IHC-P (5 - 10 µg/ml)
Reactivity:	Human (Predicted: Bat, Dog, Horse)
Host:	Rabbit
Clonality:	Polyclonal
Immunogen:	SGK3 antibody was raised against synthetic 17 amino acid peptide from C-terminus of human SGK3. Percent identity with other species by BLAST analysis: Human, Gorilla, Orangutan, Gibbon, Monkey, Marmoset, Rabbit (100%); Dog, Bat, Elephant, Panda, Horse (94%); Mouse, Rat, Hamster, Pig, Lizard (88%); Bovine, Opossum (82%).
Formulation:	PBS, 0.1% sodium azide.
Concentration:	lot specific
Purification:	Immunoaffinity purified
Conjugation:	Unconjugated
Storage:	Store at -20°C as received.
Stability:	Stable for 12 months from date of receipt.
Gene Name:	serum/glucocorticoid regulated kinase family member 3
Database Link:	NP_733827 Entrez Gene 486981 Dog Entrez Gene 23678 Human Q96BR1
Synonyms:	CISK; SGK2; SGKL
Protein Families:	Druggable Genome, Protein Kinase



[View online »](#)

Product images:



Human, Small Intestine: Formalin-Fixed Paraffin-Embedded (FFPE)