

## Product datasheet for **TA341358**

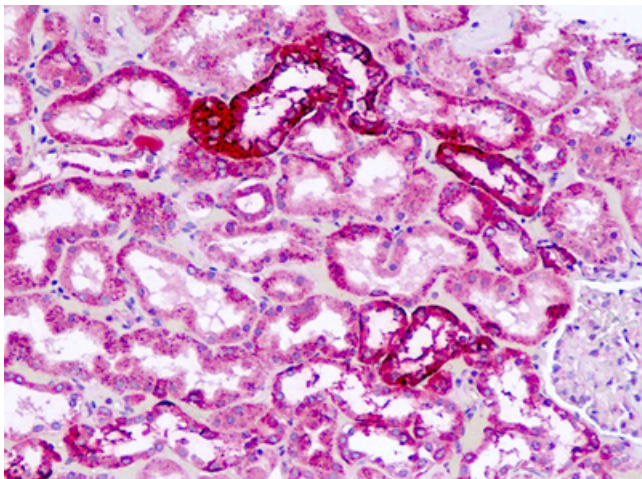
### NPY1R Rabbit Polyclonal Antibody

#### Product data:

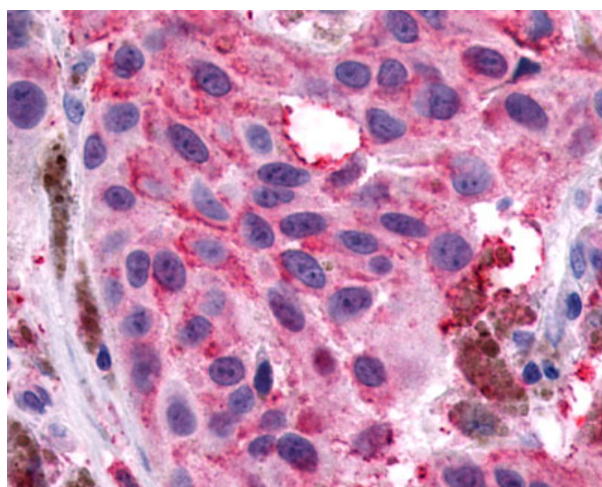
Product Type:	Primary Antibodies
Applications:	IHC
Recommended Dilution:	IHC-P (5 - 10 µg/ml)
Reactivity:	Human (Predicted: Bovine, Dog, Pig, Sheep)
Host:	Rabbit
Clonality:	Polyclonal
Immunogen:	NPY1R antibody was raised against synthetic 18 amino acid peptide from 2nd extracellular domain of human NPY1R. Percent identity with other species by BLAST analysis: Human, Gorilla, Gibbon, Monkey, Marmoset (100%); Sheep, Bovine, Dog, Elephant, Panda, Pig (94%); Hamster, Rabbit, Guinea pig (89%); Mouse, Rat, Horse (83%).
Formulation:	PBS, 0.1% sodium azide.
Concentration:	lot specific
Purification:	Immunoaffinity purified
Conjugation:	Unconjugated
Storage:	Store at -20°C as received.
Stability:	Stable for 12 months from date of receipt.
Gene Name:	neuropeptide Y receptor Y1
Database Link:	<a href="#">NP_000900</a> <a href="#">Entrez Gene 399518 Dog</a> <a href="#">Entrez Gene 4886 Human</a> <a href="#">P25929</a>
Synonyms:	NPY1-R; NPYR
Protein Families:	Druggable Genome, GPCR, Transmembrane
Protein Pathways:	Neuroactive ligand-receptor interaction



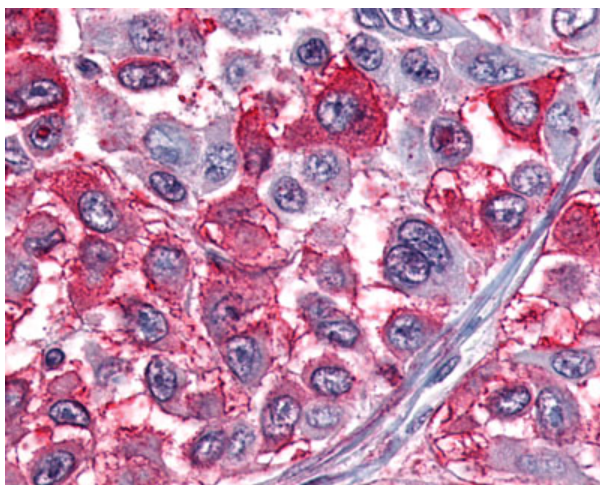
[View online »](#)

**Product images:**

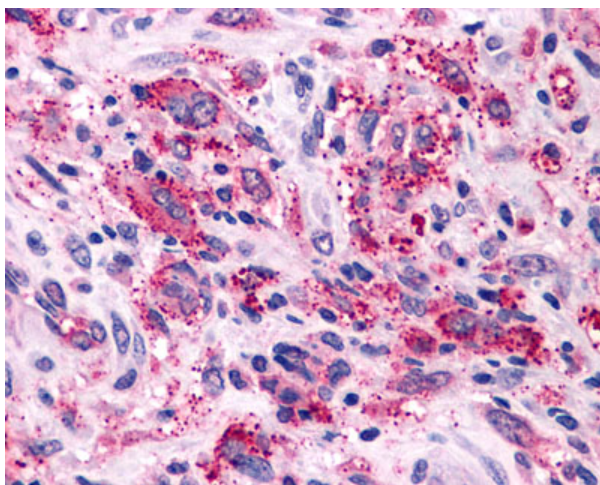
Human, Kidney: Formalin-Fixed Paraffin-Embedded (FFPE)



Anti-NPY1R antibody IHC of human Skin, Melanoma. Immunohistochemistry of formalin-fixed, paraffin-embedded tissue after heat-induced antigen retrieval.



Anti-NPY1R antibody IHC of human Skin, Melanoma. Immunohistochemistry of formalin-fixed, paraffin-embedded tissue after heat-induced antigen retrieval.



Anti-NPY1R antibody IHC of human Brain, Glioblastoma. Immunohistochemistry of formalin-fixed, paraffin-embedded tissue after heat-induced antigen retrieval.