

Product datasheet for **TA341357**

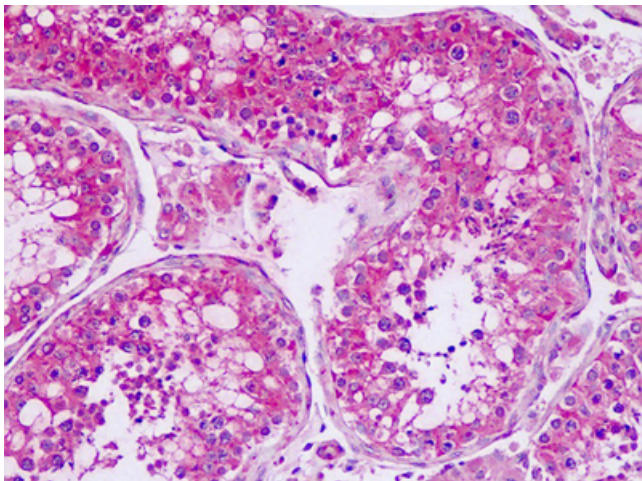
Smoothened (SMO) Rabbit Polyclonal Antibody

Product data:

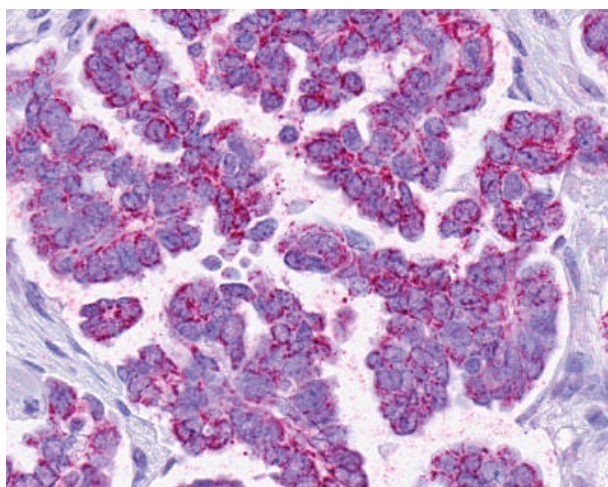
Product Type:	Primary Antibodies
Applications:	IHC
Recommended Dilution:	IHC-P (1:400)
Reactivity:	Human (Predicted: Monkey, Mouse, Rat, Bat, Bovine, Dog, Hamster, Horse, Pig, Rabbit, Chicken, Xenopus)
Host:	Rabbit
Clonality:	Polyclonal
Immunogen:	SMO / Smoothened antibody was raised against synthetic 16 amino acid peptide from 1st extracellular domain of human SMO. Percent identity with other species by BLAST analysis: Human, Gibbon, Monkey (100%); Marmoset, Mouse, Rat, Bovine, Dog, Bat, Hamster, Elephant, Panda, Horse, Rabbit, Pig, Turkey, Chicken, Platypus, Xenopus (94%); Opossum (88%).
Formulation:	PBS, 0.1% sodium azide.
Concentration:	lot specific
Purification:	Immunoaffinity purified
Conjugation:	Unconjugated
Storage:	Store at -20°C as received.
Stability:	Stable for 12 months from date of receipt.
Gene Name:	smoothened, frizzled class receptor
Database Link:	NP_005622 Entrez Gene 25273 Rat Entrez Gene 319757 Mouse Entrez Gene 482262 Dog Entrez Gene 701334 Monkey Entrez Gene 6608 Human Q99835
Synonyms:	FZD11; Gx; SMOH
Protein Families:	Druggable Genome, ES Cell Differentiation/IPS, Stem cell relevant signaling - DSL/Notch pathway, Transmembrane
Protein Pathways:	Basal cell carcinoma, Hedgehog signaling pathway, Pathways in cancer



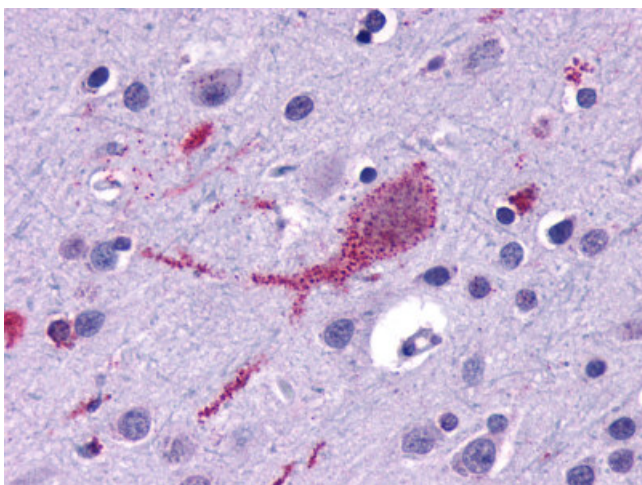
[View online »](#)

Product images:

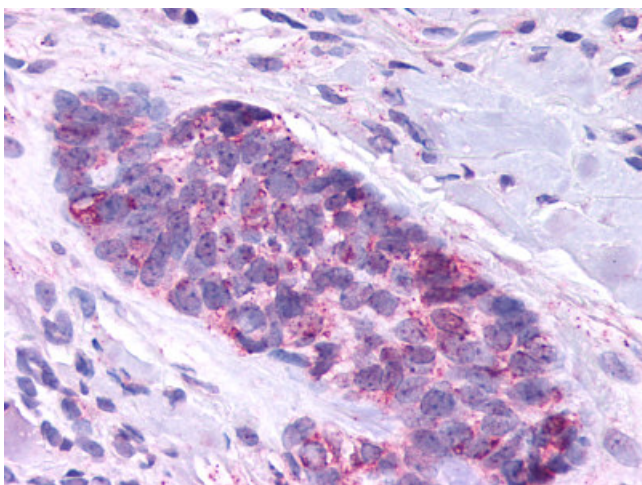
Human, Testis: Formalin-Fixed Paraffin-Embedded (FFPE)



Anti-SMO / Smoothened antibody IHC of human Ovary, Carcinoma. Immunohistochemistry of formalin-fixed, paraffin-embedded tissue after heat-induced antigen retrieval.



Anti-SMO / Smoothened antibody IHC of human brain, cortex. Immunohistochemistry of formalin-fixed, paraffin-embedded tissue after heat-induced antigen retrieval.



Anti-SMO / Smoothened antibody IHC of human Skin, Basal Cell Carcinoma. Immunohistochemistry of formalin-fixed, paraffin-embedded tissue after heat-induced antigen retrieval.