

Product datasheet for **TA341356**

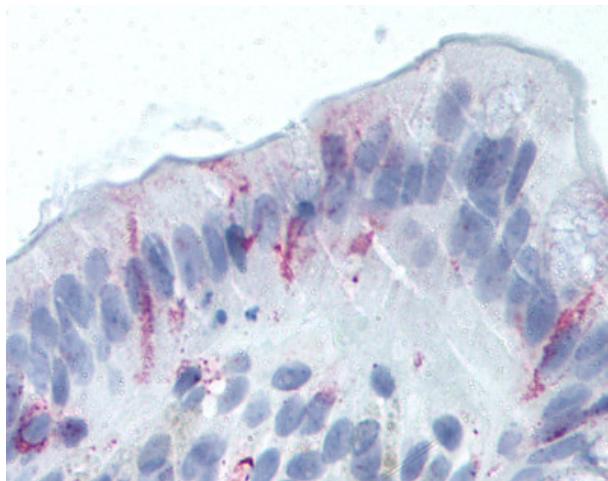
LGR5 Rabbit Polyclonal Antibody

Product data:

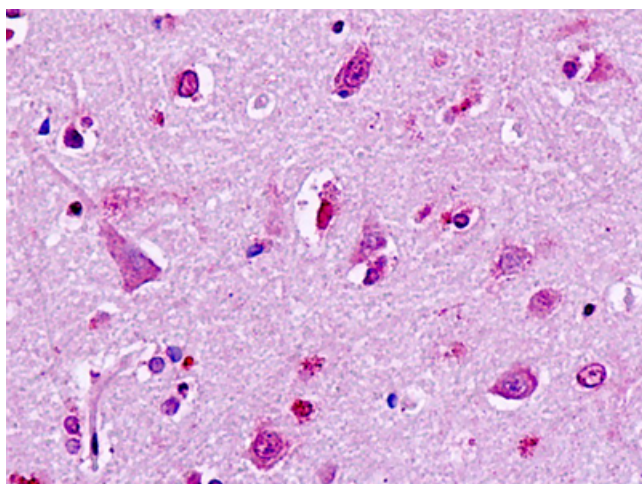
Product Type:	Primary Antibodies
Applications:	IHC
Recommended Dilution:	IHC-P (5 - 10 µg/ml)
Reactivity:	Human
Host:	Rabbit
Clonality:	Polyclonal
Immunogen:	GPR49 / LGR5 antibody was raised against synthetic 16 amino acid peptide from 1st cytoplasmic domain of human GPR49 / LGR5. Percent identity with other species by BLAST analysis: Human (100%); Gibbon, Monkey (94%); Marmoset, Bat, Opossum (88%); Mouse, Rat, Hamster, Elephant, Panda (81%).
Formulation:	PBS, 0.1% sodium azide.
Concentration:	lot specific
Purification:	Immunoaffinity purified
Conjugation:	Unconjugated
Storage:	Store at -20°C as received.
Stability:	Stable for 12 months from date of receipt.
Gene Name:	leucine-rich repeat containing G protein-coupled receptor 5
Database Link:	NP_003658 Entrez Gene 8549 Human O75473
Synonyms:	FEX; GPR49; GPR67; GRP49; HG38
Protein Families:	Druggable Genome, GPCR, Transmembrane



[View online »](#)

Product images:

Anti-GPR49 / LGR5 antibody IHC of human human colon. Immunohistochemistry of formalin-fixed, paraffin-embedded tissue after heat-induced antigen retrieval.



Human, Brain, neurons: Formalin-Fixed Paraffin-Embedded (FFPE)