

Product datasheet for **TA341353**

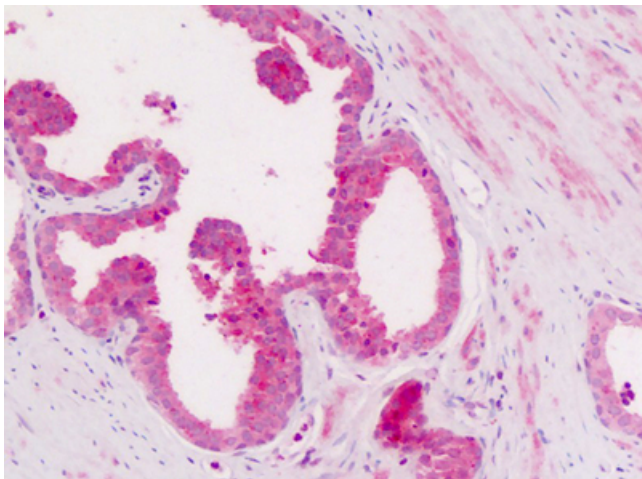
CD11c (ITGAX) Rabbit Polyclonal Antibody

Product data:

Product Type:	Primary Antibodies
Applications:	IHC
Recommended Dilution:	IHC-P (10 - 20 µg/ml)
Reactivity:	Human
Host:	Rabbit
Clonality:	Polyclonal
Immunogen:	ITGAX / CD11c antibody was raised against synthetic 15 amino acid peptide from internal region of human CD11c. Percent identity with other species by BLAST analysis: Human, Gorilla (100%); Gibbon (87%); Marmoset (80%).
Formulation:	PBS, 0.1% sodium azide.
Concentration:	lot specific
Purification:	Immunoaffinity purified
Conjugation:	Unconjugated
Storage:	Store at -20°C as received.
Stability:	Stable for 12 months from date of receipt.
Gene Name:	integrin subunit alpha X
Database Link:	NP_000878 Entrez Gene 3687 Human P20702
Synonyms:	CD11C; SLEB6
Protein Families:	Druggable Genome, Transmembrane
Protein Pathways:	Regulation of actin cytoskeleton



[View online »](#)

Product images:

Anti-CD11c antibody IHC of human prostate. Immunohistochemistry of formalin-fixed, paraffin-embedded tissue after heat-induced antigen retrieval. Antibody dilution 10-20 ug/ml.