

## Product datasheet for **TA341351**

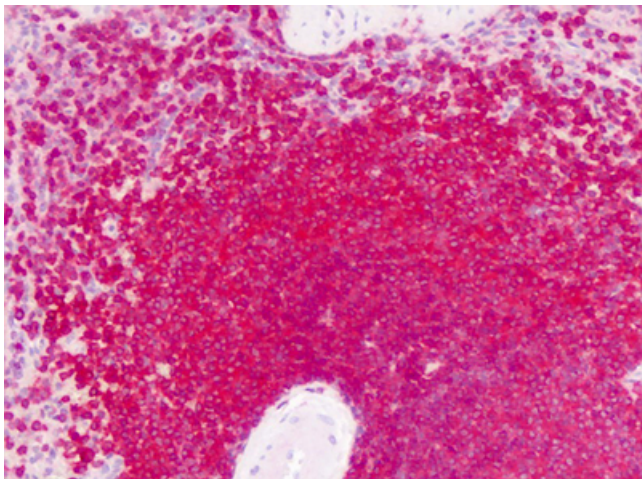
### GPRC6A Rabbit Polyclonal Antibody

#### Product data:

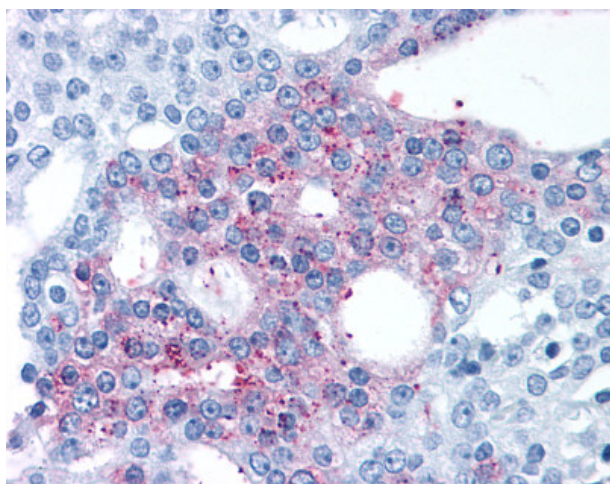
Product Type:	Primary Antibodies
Applications:	IHC
Recommended Dilution:	IHC-P (10 - 20 µg/ml)
Reactivity:	Human (Predicted: Monkey)
Host:	Rabbit
Clonality:	Polyclonal
Immunogen:	GPRC6A antibody was raised against synthetic 18 amino acid peptide from N-terminal extracellular domain of human GPRC6A. Percent identity with other species by BLAST analysis: Human (100%), Gorilla (100%), Monkey (94%), Marmoset (89%), Mouse (89%), Rat (89%), Bat (89%), Elephant (89%), Hamster (83%), Panda (83%), Horse (83%), Pig (83%).
Formulation:	PBS, 0.1% sodium azide.
Concentration:	lot specific
Purification:	Immunoaffinity purified
Conjugation:	Unconjugated
Storage:	Store at -20°C as received.
Stability:	Stable for 12 months from date of receipt.
Gene Name:	G protein-coupled receptor class C group 6 member A
Database Link:	<a href="#">NP_683766</a> <a href="#">Entrez Gene 715520 Monkey</a> <a href="#">Entrez Gene 222545 Human</a> <a href="#">Q5T6X5</a>
Synonyms:	bA86F4.3; GPCR
Protein Families:	Druggable Genome, Transmembrane



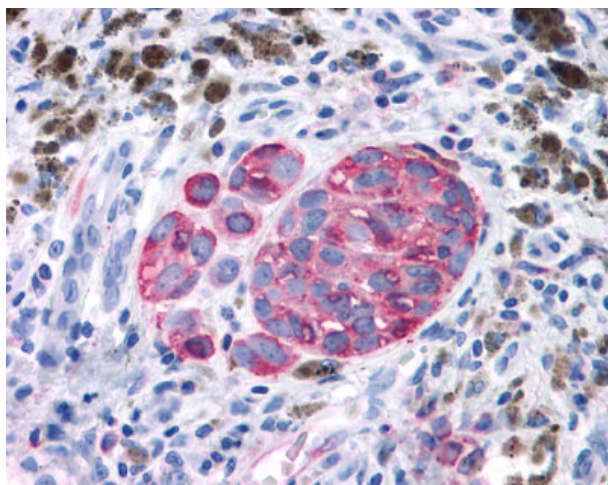
[View online »](#)

**Product images:**

Anti-GPRC6A antibody IHC of human spleen, lymphocytes. Immunohistochemistry of formalin-fixed, paraffin-embedded tissue after heat-induced antigen retrieval. Antibody dilution 10-20 ug/ml.



Anti-GPRC6A antibody IHC of human Prostate, Carcinoma. Immunohistochemistry of formalin-fixed, paraffin-embedded tissue after heat-induced antigen retrieval.



Anti-GPRC6A antibody IHC of human Skin, Melanoma. Immunohistochemistry of formalin-fixed, paraffin-embedded tissue after heat-induced antigen retrieval.