

## Product datasheet for **TA341350**

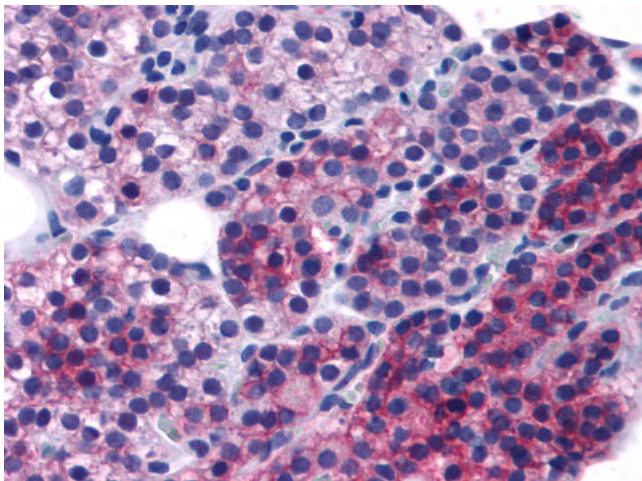
### Calcium Sensing Receptor (CASR) Rabbit Polyclonal Antibody

#### Product data:

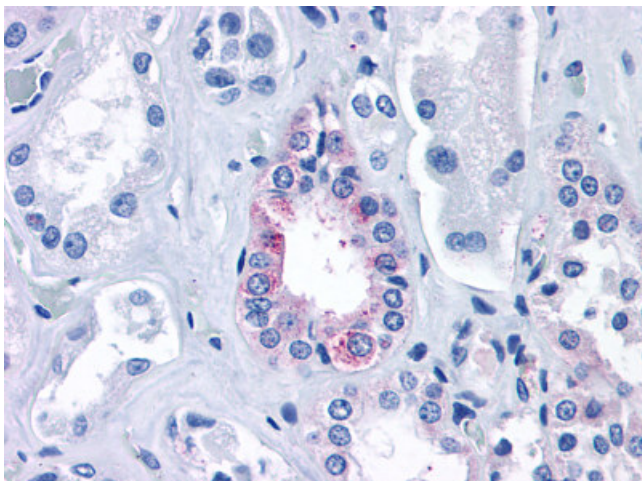
Product Type:	Primary Antibodies
Applications:	IHC
Recommended Dilution:	IHC-P (5 µg/ml)
Reactivity:	Human (Predicted: Monkey)
Host:	Rabbit
Clonality:	Polyclonal
Immunogen:	CASR/Calcium Sensing Receptor antibody was raised against synthetic 20 amino acid peptide from N-terminal extracellular domain of human CASR. Percent identity with other species by BLAST analysis: Human, Gorilla (100%); Gibbon, Monkey, Marmoset (95%); Dog, Panda, Horse, Pig (85%); Bovine, Hamster, Elephant (80%).
Formulation:	PBS, 0.1% sodium azide.
Concentration:	lot specific
Purification:	Immunoaffinity purified
Conjugation:	Unconjugated
Storage:	Store at -20°C as received.
Stability:	Stable for 12 months from date of receipt.
Gene Name:	calcium sensing receptor
Database Link:	<a href="#">NP_000379</a> <a href="#">Entrez Gene 714441 Monkey</a> <a href="#">Entrez Gene 846 Human</a> <a href="#">P41180</a>
Synonyms:	CAR; EIG8; FHH; FIH; GPRC2A; HHC; HHC1; HYPOC1; NSHPT; PCAR1
Protein Families:	Druggable Genome, GPCR, Transmembrane



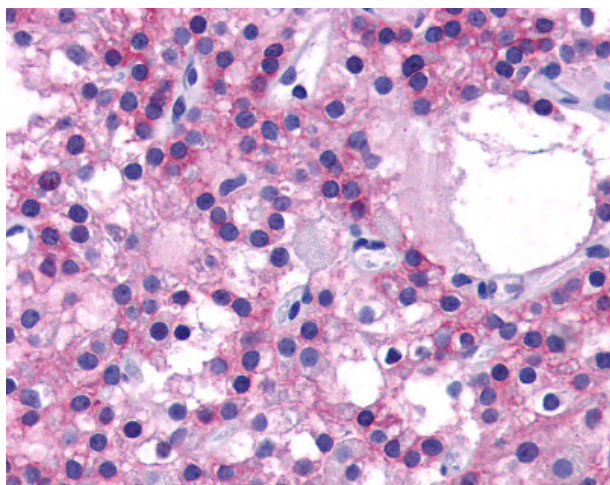
[View online »](#)

**Product images:**

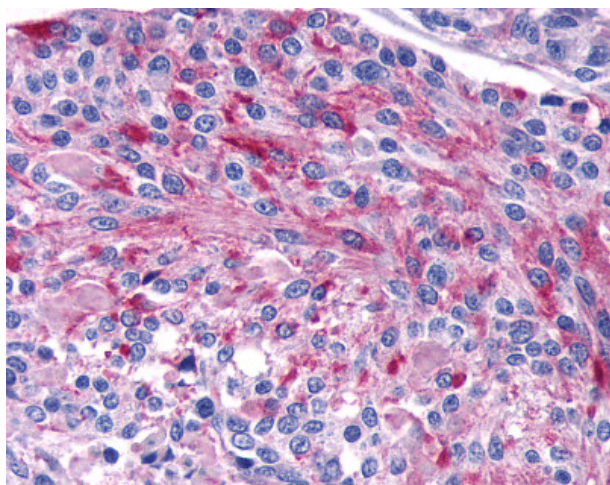
Anti-CASR antibody IHC of human parathyroid. Immunohistochemistry of formalin-fixed, paraffin-embedded tissue after heat-induced antigen retrieval.



Anti-CASR/Calcium Sensing Receptor antibody IHC of human kidney, diabetes. Immunohistochemistry of formalin-fixed, paraffin-embedded tissue after heat-induced antigen retrieval.



Anti-CASR/Calcium Sensing Receptor antibody  
IHC of human Parathyroid, Adenoma.  
Immunohistochemistry of formalin-fixed,  
paraffin-embedded tissue after heat-induced  
antigen retrieval.



Anti-CASR/Calcium Sensing Receptor antibody  
IHC of human Thyroid, Medullary Carcinoma.  
Immunohistochemistry of formalin-fixed,  
paraffin-embedded tissue after heat-induced  
antigen retrieval.