

Product datasheet for **TA341349**

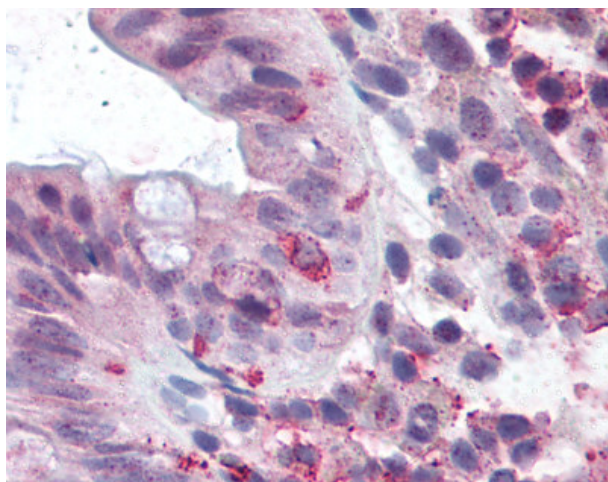
LGR5 Rabbit Polyclonal Antibody

Product data:

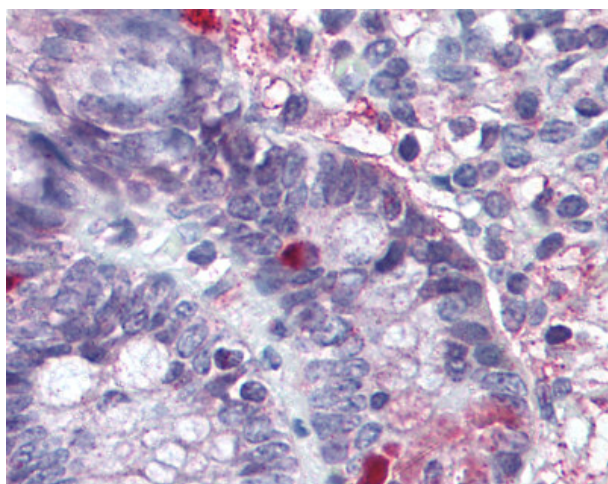
Product Type:	Primary Antibodies
Applications:	IHC
Recommended Dilution:	IHC-P (5 µg/ml)
Reactivity:	Human (Predicted: Monkey, Bat, Bovine, Hamster, Rabbit)
Host:	Rabbit
Clonality:	Polyclonal
Immunogen:	GPR49 / LGR5 antibody was raised against synthetic 20 amino acid peptide from 1st cytoplasmic domain of human GPR49 / LGR5. Percent identity with other species by BLAST analysis: Human, Gibbon, Monkey (100%); Marmoset, Bovine, Bat (95%); Hamster, Elephant, Panda, Rabbit (90%); Mouse, Rat, Opossum (85%).
Formulation:	PBS, 0.1% sodium azide.
Concentration:	lot specific
Purification:	Immunoaffinity purified
Conjugation:	Unconjugated
Storage:	Store at -20°C as received.
Stability:	Stable for 12 months from date of receipt.
Gene Name:	leucine-rich repeat containing G protein-coupled receptor 5
Database Link:	NP_003658 Entrez Gene 718661 Monkey Entrez Gene 8549 Human O75473
Synonyms:	FEX; GPR49; GPR67; GRP49; HG38
Protein Families:	Druggable Genome, GPCR, Transmembrane



[View online »](#)

Product images:

Human Colon: Formalin-Fixed Paraffin-Embedded (FFPE)



Human, Small Intestine: Formalin-Fixed Paraffin-Embedded (FFPE)