

## Product datasheet for **TA341348**

### GPR92 (LPAR5) Rabbit Polyclonal Antibody

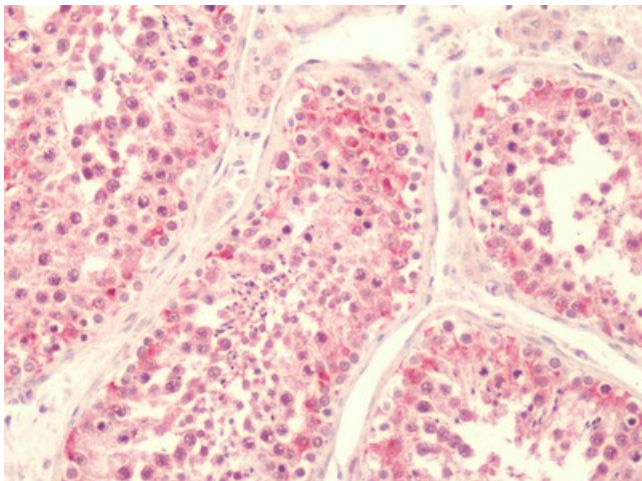
#### Product data:

Product Type:	Primary Antibodies
Applications:	IHC
Recommended Dilution:	IHC-P (5 - 10 µg/ml)
Reactivity:	Human (Predicted: Monkey)
Host:	Rabbit
Clonality:	Polyclonal
Immunogen:	LPAR5 / GPR92 antibody was raised against synthetic 16 amino acid peptide from C-terminus of human LPAR5 / GPR92. Percent identity with other species by BLAST analysis: Human, Gorilla (100%); Gibbon, Monkey (94%).
Formulation:	PBS, 0.1% sodium azide.
Concentration:	lot specific
Purification:	Immunoaffinity purified
Conjugation:	Unconjugated
Storage:	Store at -20°C as received.
Stability:	Stable for 12 months from date of receipt.
Gene Name:	lysophosphatidic acid receptor 5
Database Link:	<a href="#">NP_001136433</a> <a href="#">Entrez Gene 713283 Monkey</a> <a href="#">Entrez Gene 57121 Human</a> <a href="#">Q9H1C0</a>
Synonyms:	GPR92; GPR93; KPG_010; LPA5
Protein Families:	Druggable Genome, GPCR, Transmembrane



[View online »](#)

**Product images:**



Human, Testis: Formalin-Fixed Paraffin-Embedded (FFPE)