

Product datasheet for **TA341346**

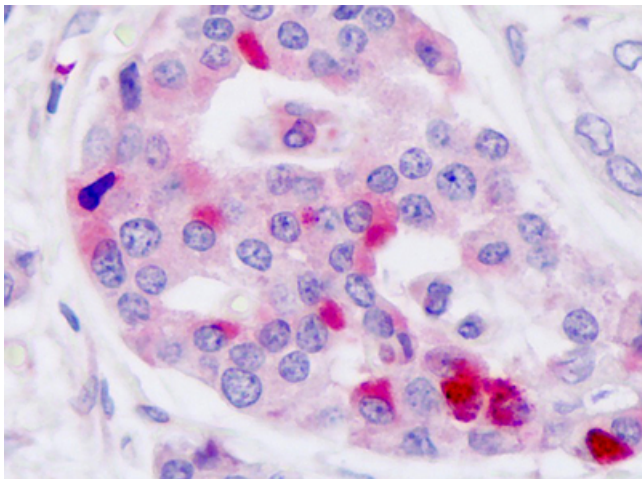
GLP1R Rabbit Polyclonal Antibody

Product data:

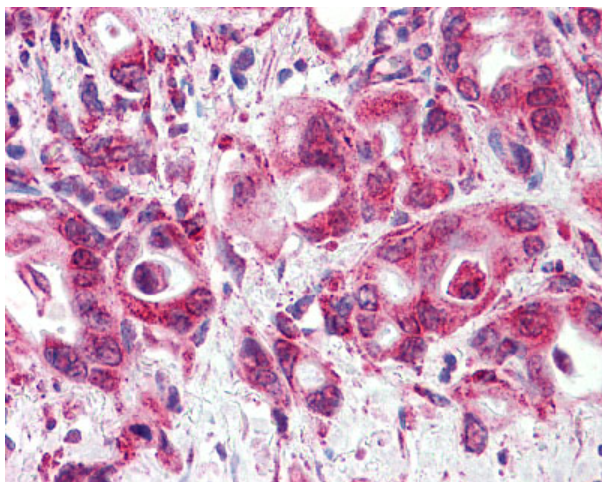
Product Type:	Primary Antibodies
Applications:	IHC
Recommended Dilution:	IHC-P (3 - 4 µg/ml)
Reactivity:	Human (Predicted: Monkey, Mouse, Rat, Bovine, Hamster, Pig, Rabbit, Sheep)
Host:	Rabbit
Clonality:	Polyclonal
Immunogen:	GLP1R/GLP-1R/GLP-1 Receptor antibody was raised against synthetic 16 amino acid peptide from N-terminal extracellular domain of human GLP1R. Percent identity with other species by BLAST analysis: Human, Gorilla, Gibbon, Monkey (100%); Marmoset, Mouse, Rat, Sheep, Bovine, Hamster, Elephant, Rabbit, Pig (94%).
Formulation:	PBS, 0.1% sodium azide.
Concentration:	lot specific
Purification:	Immunoaffinity purified
Conjugation:	Unconjugated
Storage:	Store at -20°C as received.
Stability:	Stable for 12 months from date of receipt.
Gene Name:	glucagon like peptide 1 receptor
Database Link:	NP_002053 Entrez Gene 14652 Mouse Entrez Gene 25051 Rat Entrez Gene 719548 Monkey Entrez Gene 2740 Human P43220
Synonyms:	MGC138331
Protein Families:	Druggable Genome, ES Cell Differentiation/IPS, GPCR, Transmembrane
Protein Pathways:	Neuroactive ligand-receptor interaction



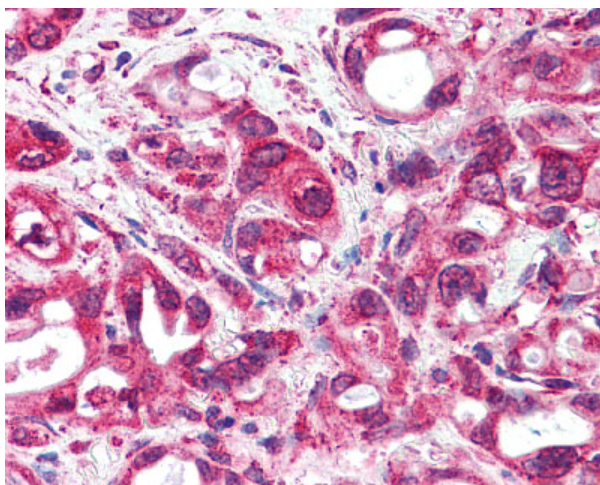
[View online »](#)

Product images:

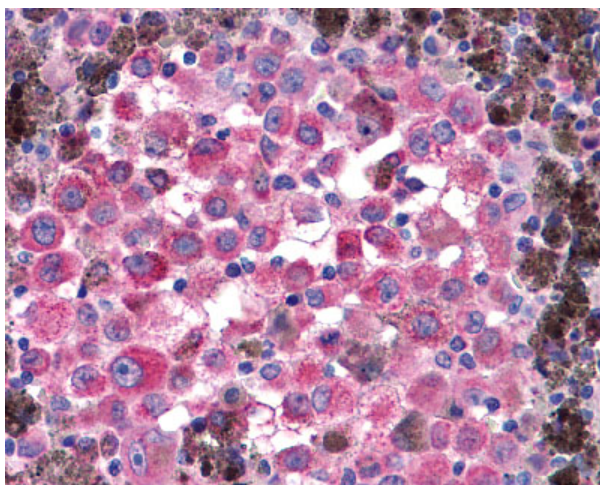
Anti-GLP-1 Receptor / GLP1R antibody IHC of human pancreas, islet of Langerhans. Immunohistochemistry of formalin-fixed, paraffin-embedded tissue after heat-induced antigen retrieval. Antibody dilution 3-4 ug/ml.



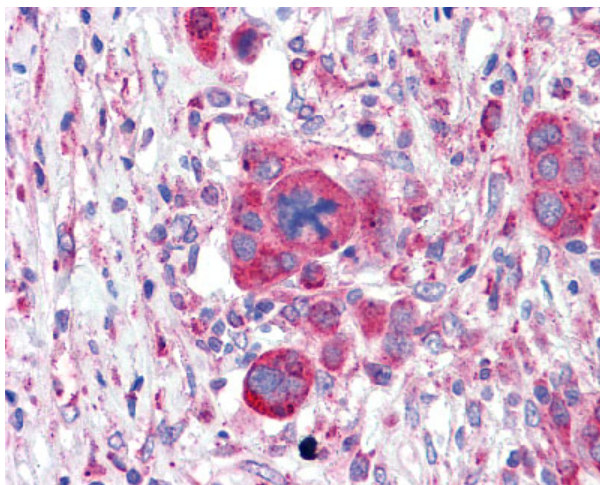
Anti-GLP1R/GLP-1R/GLP-1 Receptor antibody IHC of human Pancreas, Carcinoma. Immunohistochemistry of formalin-fixed, paraffin-embedded tissue after heat-induced antigen retrieval.



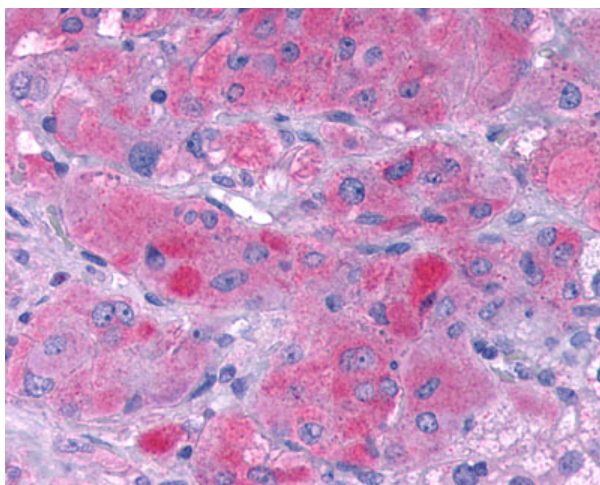
Anti-GLP1R/GLP-1R/GLP-1 Receptor antibody IHC of human Pancreas, Carcinoma.
Immunohistochemistry of formalin-fixed, paraffin-embedded tissue after heat-induced antigen retrieval.



Anti-GLP1R/GLP-1R/GLP-1 Receptor antibody IHC of human Skin, Melanoma.
Immunohistochemistry of formalin-fixed, paraffin-embedded tissue after heat-induced antigen retrieval.



Anti-GLP1R/GLP-1R/GLP-1 Receptor antibody IHC of human Ovary, Carcinoma.
Immunohistochemistry of formalin-fixed, paraffin-embedded tissue after heat-induced antigen retrieval.



Anti-GLP1R/GLP-1R/GLP-1 Receptor antibody IHC of human Adrenal, Pheochromocytoma. Immunohistochemistry of formalin-fixed, paraffin-embedded tissue after heat-induced antigen retrieval.