

Product datasheet for **TA341345**

Smoothened (SMO) Rabbit Polyclonal Antibody

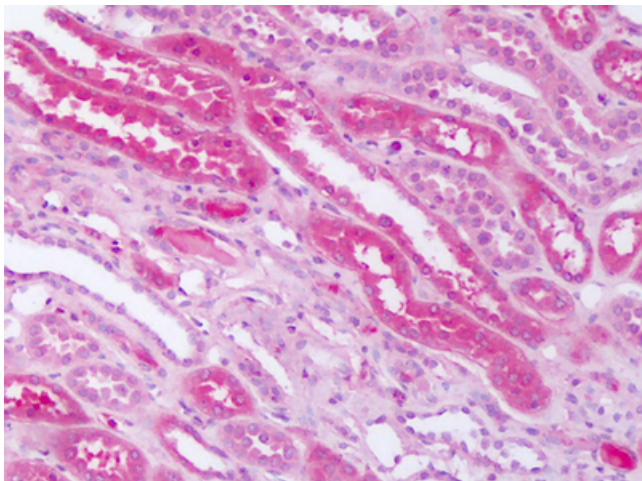
Product data:

Product Type:	Primary Antibodies
Applications:	IHC
Recommended Dilution:	IHC-P (10 µg/ml)
Reactivity:	Human
Host:	Rabbit
Clonality:	Polyclonal
Immunogen:	SMO / Smoothened antibody was raised against synthetic 15 amino acid peptide from N-terminal extracellular domain of human SMO. Percent identity with other species by BLAST analysis: Human, Gorilla, Gibbon, Monkey, Marmoset, Mouse, Rat, Bovine, Dog, Bat, Hamster, Elephant, Panda, Horse, Rabbit, Pig, Platypus (100%); Opossum (93%); Turkey, Chicken, Xenopus (87%); Zebrafish, Seq squirt (80%).
Formulation:	PBS, 0.1% sodium azide.
Concentration:	lot specific
Purification:	Immunoaffinity purified
Conjugation:	Unconjugated
Storage:	Store at -20°C as received.
Stability:	Stable for 12 months from date of receipt.
Gene Name:	smoothened, frizzled class receptor
Database Link:	NP_005622 Entrez Gene 6608 Human Q99835
Synonyms:	FZD11; Gx; SMOH
Protein Families:	Druggable Genome, ES Cell Differentiation/IPS, Stem cell relevant signaling - DSL/Notch pathway, Transmembrane
Protein Pathways:	Basal cell carcinoma, Hedgehog signaling pathway, Pathways in cancer



[View online »](#)

Product images:



Human Kidney: Formalin-Fixed Paraffin-Embedded (FFPE)