

Product datasheet for **TA341342**

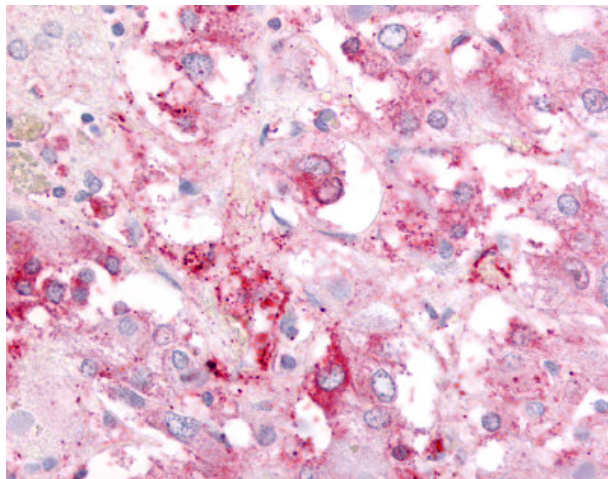
GPR182 Rabbit Polyclonal Antibody

Product data:

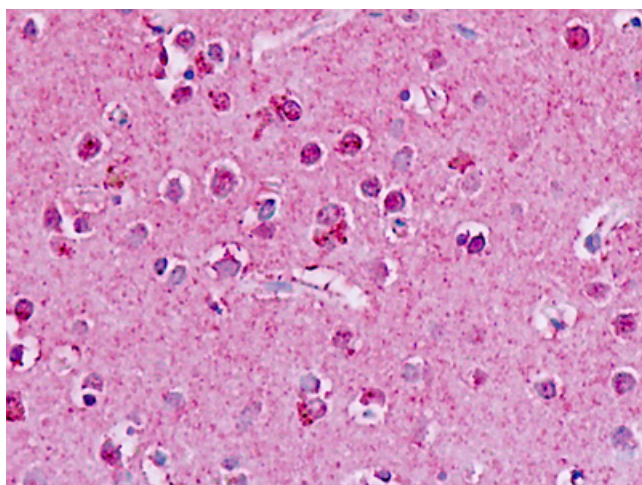
Product Type:	Primary Antibodies
Applications:	IHC
Recommended Dilution:	IHC-P (5 - 10 µg/ml)
Reactivity:	Human
Host:	Rabbit
Clonality:	Polyclonal
Immunogen:	GPR182 / ADMR antibody was raised against synthetic 18 amino acid peptide from C-terminus of human GPR182 / ADMR. Percent identity with other species by BLAST analysis: Human (100%); Gorilla, Gibbon (94%).
Formulation:	PBS, 0.1% sodium azide.
Concentration:	lot specific
Purification:	Immunoaffinity purified
Conjugation:	Unconjugated
Storage:	Store at -20°C as received.
Stability:	Stable for 12 months from date of receipt.
Gene Name:	G protein-coupled receptor 182
Database Link:	NP_009195 Entrez Gene 11318 Human O15218
Synonyms:	7TMR; ADMR; AM-R; AMR; G10D; gamrh; hrhAMR
Protein Families:	Druggable Genome, GPCR, Transmembrane



[View online »](#)

Product images:

Anti-GPR182 / ADMR antibody IHC of human adrenal. Immunohistochemistry of formalin-fixed, paraffin-embedded tissue after heat-induced antigen retrieval.



Human, Brain, neurons: Formalin-Fixed Paraffin-Embedded (FFPE)