

Product datasheet for **TA341336**

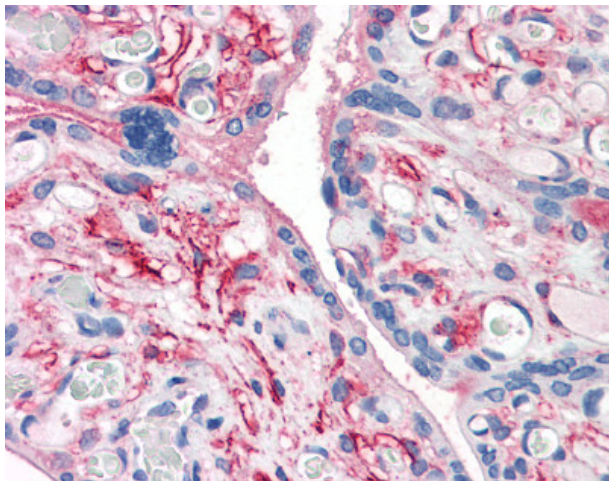
CD26 (DPP4) Rabbit Polyclonal Antibody

Product data:

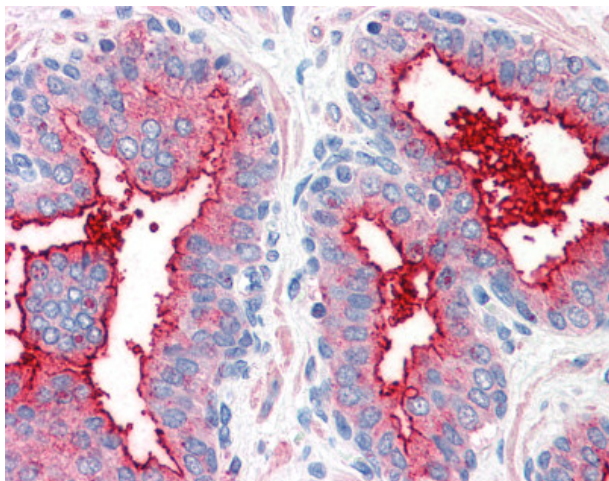
Product Type:	Primary Antibodies
Applications:	IHC
Recommended Dilution:	IHC-P (5 - 10 µg/ml)
Reactivity:	Human (Predicted: Monkey)
Host:	Rabbit
Clonality:	Polyclonal
Immunogen:	DPP4 / CD26 antibody was raised against synthetic 20 amino acid peptide from internal region of human CD26. Percent identity with other species by BLAST analysis: Human, Gorilla, Gibbon (100%); Chimpanzee, Orangutan, Monkey (95%); Galago (90%); Marmoset, Panda, Horse, Rabbit, Pig (85%); Elephant, Cat, Dog (80%).
Formulation:	PBS, 0.1% sodium azide.
Concentration:	lot specific
Purification:	Immunoaffinity purified
Conjugation:	Unconjugated
Storage:	Store at -20°C as received.
Stability:	Stable for 12 months from date of receipt.
Gene Name:	dipeptidyl peptidase 4
Database Link:	NP_001926 Entrez Gene 654491 Monkey Entrez Gene 1803 Human P27487
Synonyms:	ADABP; ADCP2; CD26; DPPIV; TP103
Protein Families:	Druggable Genome, Protease, Secreted Protein, Transmembrane



[View online »](#)

Product images:

Anti-CD26 antibody IHC of human placenta. Immunohistochemistry of formalin-fixed, paraffin-embedded tissue after heat-induced antigen retrieval.



Anti-CD26 antibody IHC of human prostate. Immunohistochemistry of formalin-fixed, paraffin-embedded tissue after heat-induced antigen retrieval.